



Application Instructions

Ceiling Fan

Model No. / 型號 / Tên Model

F-60DHN

F-60DGN F-48DGL



Application Instructions

Ceiling Fan

Thank you for purchasing this Panasonic product.

Before operating this product, please read the instructions carefully, and save this manual for future use.

Contents

System Overview	2 - 3
How to prepare for setup	4 - 5
How to connect product to home network	5 - 10
How to register product to smart devices	11 - 12
How to use	13 - 25
How to cancel registration of ceiling fan	26
Copyright	27 - 30

應用程式說明

吊扇

感謝您購買 Panasonic 產品。

操作此產品前，請仔細閱讀說明書，並保存本手冊以作日後參考。

目錄

系統概述	2 - 3
如何準備設置	4 - 5
如何將產品連接到家用網路	5 - 10
如何在智慧設備上註冊產品	11 - 12
如何使用	13 - 25
如何取消吊扇註冊	26
版權	27 - 30

Chỉ Dẫn Ứng Dụng

Quạt Trần

Cảm ơn quý khách hàng đã mua sản phẩm quạt Panasonic.

Trước khi sử dụng sản phẩm này, xin vui lòng đọc kỹ các hướng dẫn và cất giữ sách hướng dẫn sử dụng này để tham khảo sau này.

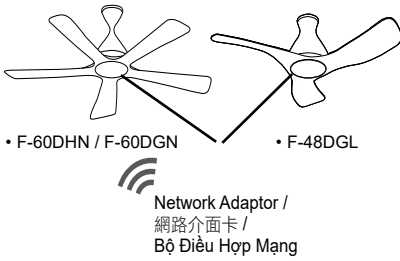
Nội dung

Tổng Quan Hệ Thống	2 - 3
Cách chuẩn bị cài đặt	4 - 5
Cách kết nối sản phẩm với mạng gia đình	5 - 10
Cách đăng ký sản phẩm với các thiết bị thông minh	11 - 12
Cách sử dụng	13 - 25
Cách hủy đăng ký quạt trần	26
Bản Quyền	27 - 30

System Overview

系統概述

Tổng Quan Hệ Thống

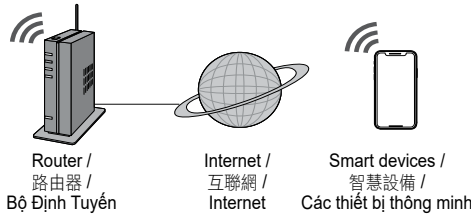


• F-60DHN / F-60DGN

• F-48DGL

Network Adaptor /
網路介面卡 /
Bộ Điều Hợp Mạng

Items you need to prepare
(purchase and subscribe separately) /
你需要另行準備
(購買或訂購的物品) /
Những thứ cần chuẩn bị
(mua và đăng ký mua riêng)



Router /
路由器 /
Bộ Định Tuyến

Internet /
互聯網 /
Internet

Smart devices /
智慧設備 /
Các thiết bị thông minh

Download from App Store & Play Store /
請從 App Store 和 Play Store /
Tải Xuống từ App Store & Play Store



Ceiling Fan

- Requires the App to work with smart devices with Android 6 and above, or iOS 12 and above.
There is no guarantee that the App will work well if the Operating System is below Android 6 or iOS 12.
- The Network Adaptor is designed specifically as a terminal for "Ceiling Fan" App.
- The Wi-Fi network coverage must reach the ceiling fan installation location.
- This product may have latency in operation for 1 to 3 seconds due to the command need to send through the server.
- 1 ceiling fan can be registered by 4 user accounts.
- 1 user account can register and control 3 ceiling fan simultaneously.

- 本應用程式適用於 Android 6 或 iOS 12 及以上系統的智慧設備。
不保證本應用程式在 Android 6 或 iOS 12 以下的作業系統上能良好運行。
- 網路介面卡專門設計為 "Ceiling Fan" 應用程式的一個終端。
- Wi-Fi 網路必須覆蓋到吊扇安裝位置。
- 由於命令需要通過伺服器發送，產品可能有 1 到 3 秒的運行延遲。
- 1 台吊扇可有 4 個註冊用戶帳號。
- 1 個用戶帳號可同時註冊並控制 3 台吊扇。

- Yêu cầu Ứng Dụng làm việc với các thiết bị thông minh có Android 6 trở lên, hoặc iOS 12 trở lên.
Không bảo đảm rằng Ứng Dụng sẽ hoạt động tốt nếu Hệ Điều Hành thấp hơn Android 6 hoặc iOS 12.
- Bộ Điều Hợp Mạng được thiết kế đặc biệt như một thiết bị đầu cuối cho Ứng Dụng "Ceiling Fan".
- Độ phủ sóng mạng Wi-Fi phải chạm vị trí lắp đặt quạt trần.
- Sản phẩm này có thể có thời gian ngừng hoạt động từ 1 đến 3 giây do nhu cầu lệnh gửi thông qua máy chủ.
- 4 tài khoản người dùng có thể đăng ký 1 quạt trần.
- 1 tài khoản người dùng có thể đăng ký và điều khiển 3 quạt trần cùng một lúc.

Specification / 規格 / Thông số kỹ thuật

Network Adaptor / 網路介面卡 / Bộ Điều Hợp Mạng	Wi-Fi Module (built-in)
Model / 型號 / Model	DNSK-P11
Input Voltage / 輸入電壓 / Điện Áp Vào	DC 5V (From Ceiling Fan Unit)
Current Consumption / 電流消耗 / Dòng Điện Tiêu Thụ	Tx/Rx max. 290/100 mA
Wi-Fi standard / Wi-Fi 標準 / Tiêu chuẩn Wi-Fi	IEEE 802.11 b/g/n
Frequency range / 頻率範圍 / Dải tần số	2.4 GHz band
Encryption / 加密 / Mã Hóa	WPA2-PSK (TKIP/AES)

Precaution / 小心 / Thận Trọng

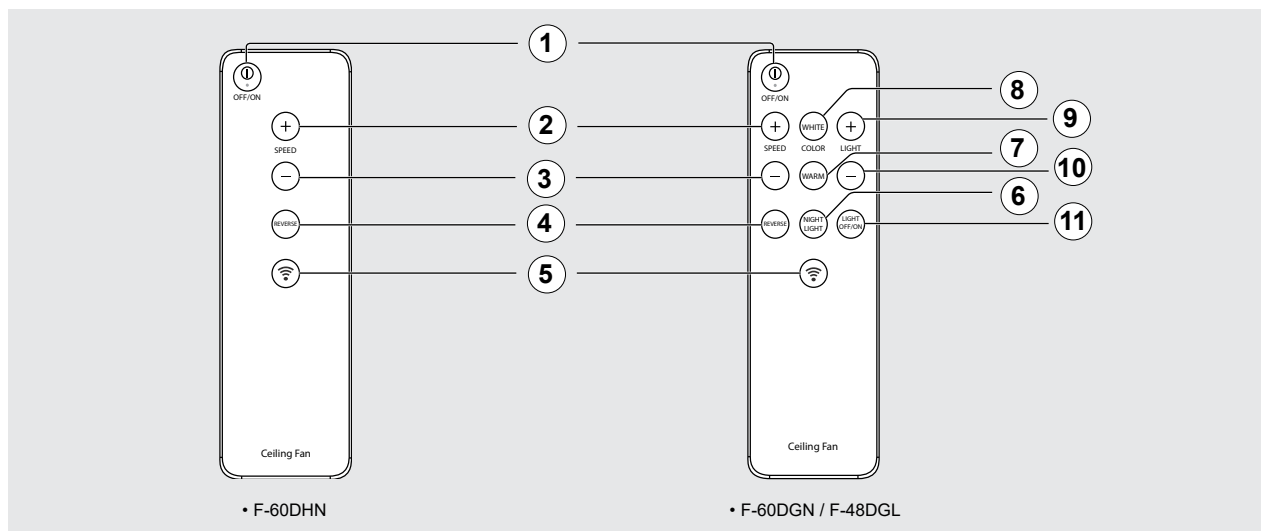
- DO NOT disassemble or alter this Network Adaptor in any way.
- DO NOT remove this Network Adaptor from the ceiling fan during operations.
- Data transmitted and received over radio waves may be intercepted and monitored.
- Please be cautioned when go near to the ceiling fan or cleaning the ceiling fan. Due to another user might switch on the ceiling fan away from home. If the ceiling fan is controlled by App, ceiling fan will turn on 3 seconds after the buzzer beeps.
- 不要拆卸或以任何方式改變此網路介面卡。
- 運行過程中，請勿將此網路介面卡從吊扇上拆下。
- 通過無線電波傳輸和接收的資料可能被截獲並被監視。
- 靠近吊扇或清潔吊扇時，請注意安全。因為其他用戶可能遠端開啟吊扇。如果吊扇是由應用程式控制的，那麼吊扇會在蜂鳴器響 3 秒後開啟。
- KHÔNG ĐƯỢC tháo hoặc thay đổi Bộ Điều Hợp Mạng này dưới bất cứ hình thức nào.
- KHÔNG ĐƯỢC tháo Bộ Điều Hợp Mạng này ra khỏi quạt trần trong quá trình vận hành.
- Dữ liệu được truyền và nhận qua sóng phát thanh có thể bị chặn và giám sát.
- Cần thận trọng khi đến gần quạt trần hoặc vệ sinh quạt trần. Do người dùng khác có thể bật nguồn quạt trần từ khoảng cách xa nhà. Nếu quạt trần đang được điều khiển bằng Ứng Dụng, quạt trần sẽ bật nguồn trong 3 giây sau khi còi phát ra tiếng bip.

Type of wireless / 無線類型 / Loại vô tuyến	Frequency band / 頻段 / Dải tần số	Max. EIRP (dBm) / 最大有效輻射功率 (dBm) / EIRP tối đa (dBm)
WLAN	2412 - 2472 MHz	20 dBm

Remote Control

遙控器

Điều Khiển Từ Xa



① OFF/ON Button

Press to activate or stop the Ceiling Fan.
"ON" - Short beeping sound.
"OFF" - Long beeping sound.

② '+' SPEED Button

Increase Fan Speed, maximum fan speed is 10.

③ '-' SPEED Button

Decrease Fan Speed, minimum fan speed is 1.

④ REVERSE Button

Change the direction of fan rotation (clockwise, anticlockwise).

⑤ Wi-Fi Button

Press to activate or off the Ceiling Fan wireless network.
"ON" - Short beeping sound.
"OFF" - Long beeping sound.

⑥ NIGHT LIGHT Button

Press to select Night Light setting.

⑦ WARM COLOR Button

Press to select Light color - Warm.

⑧ WHITE COLOR Button

Press to select Light color - White.

⑨ '+' LIGHT Button

Increase light brightness gradually.

⑩ '-' LIGHT Button

Decrease light brightness gradually.

⑪ LIGHT OFF/ON Button

Turn off or turn on the Light.
"ON" - Short beeping sound.
"OFF" - Long beeping sound.

① OFF/ON 按鈕

按下即可啟動或停止吊扇。
"ON" - 發出短促的“嗶”聲。
"OFF" - 發出長長的“嗶”聲。

② '+' SPEED 按鈕

增加風扇速度，最大速度為 10。

③ '-' SPEED 按鈕

降低風扇速度，最小速度為 1。

④ REVERSE 按鈕

改變風扇旋轉方向(順時針、逆時針)。

⑤ Wi-Fi 按鈕

打開或關閉吊扇無線網路。
"ON" - 發出短促的“嗶”聲。
"OFF" - 發出長長的“嗶”聲。

⑥ NIGHT LIGHT 按鈕

選擇夜光設置。

⑦ WARM COLOR 按鈕

選擇燈光顏色—暖色。

⑧ WHITE COLOR 按鈕

選擇燈光顏色—白色。

⑨ '+' LIGHT 按鈕

逐漸增加光的亮度。

⑩ '-' LIGHT 按鈕

逐漸減少光的亮度。

⑪ LIGHT OFF/ON 按鈕

關燈或開燈。
"ON" - 發出短促的“嗶”聲。
"OFF" - 發出長長的“嗶”聲。

① Nút OFF/ON

Nhấn để khởi động hoặc dừng Quạt Trần.
"ON" (Bật) - Tiếng "bíp" ngắn.
"OFF" (Tắt) - Tiếng "bíp" dài.

② Nút '+' SPEED

Tăng Tốc Độ Quạt, tốc độ quạt lớn nhất là 10.

③ Nút '-' SPEED

Giảm Tốc Độ Quạt, tốc độ quạt nhỏ nhất là 1.

④ Nút REVERSE

Đổi hướng quay của quạt (theo chiều kim đồng hồ, ngược chiều kim đồng hồ).

⑤ Nút Wi-Fi

Ấn để kích hoạt hoặc tắt mạng không dây của Quạt Trần.
"ON" (Bật) - Tiếng "bíp" ngắn.
"OFF" (Tắt) - Tiếng "bíp" dài.

⑥ Nút NIGHT LIGHT

Ấn để chọn cài đặt Đèn Ngủ.

⑦ Nút WARM COLOR

Ấn để chọn Màu Đèn - Ấm.

⑧ Nút WHITE COLOR

Ấn để chọn Màu Đèn - Trắng.

⑨ Nút '+' LIGHT

Tăng dần độ sáng của đèn.

⑩ Nút '-' LIGHT

Giảm dần độ sáng của đèn.

⑪ Nút LIGHT OFF/ON

Tắt hoặc bật Đèn.
"ON" (Bật) - Tiếng "bíp" ngắn.
"OFF" (Tắt) - Tiếng "bíp" dài.

How to prepare for setup

如何準備設置

Cách chuẩn bị cài đặt

App Installation / 安裝應用程式 / Cài Đặt Ứng Dụng

For Android user (Android 6 and above) / Android 用戶 (Android 6 及以上) / Đối với người dùng Android (Android 6 trở lên)

- Open Play Store. / 打開 Play Store。 / Mở Play Store.
- Search for “Ceiling Fan” App. / 搜索 “Ceiling Fan” 應用程式。 / Tìm kiếm Ứng Dụng “Ceiling Fan” .
- Download and install. / 下載並安裝。 / Tải xuống và cài đặt.

For iOS user (iOS 12 and above) / iOS 用戶 (iOS 12 及以上) / Đối với người dùng iOS (iOS 12 trở lên)

- Open App Store. / 打開 App Store。 / Mở App Store.
- Search for “Ceiling Fan” App. / 搜索 “Ceiling Fan” 應用程式。 / Tìm kiếm Ứng Dụng “Ceiling Fan” .
- Download and install. / 下載並安裝。 / Tải xuống và cài đặt.

■ Note:

- The App user interface image may change for version upgrade without prior notice.
- There is no charge for using this App. However, other charges may be incurred for network connection.

■ 備注:

- 應用程式使用者介面畫面可能會因版本升級而改變，恕不另行通知。
- 本應用程式不收費。但是，連接網路可能會產生其他費用。

■ Lưu ý:

- Hình ảnh giao diện người dùng Ứng Dụng có thể thay đổi để nâng cấp phiên bản không thông báo trước.
- Không tính phí khi sử dụng Ứng Dụng này. Tuy nhiên, có thể phải trả các chi phí khác để kết nối mạng.

App Setting / 應用程式設置 / Cài Đặt Ứng Dụng

Before setting

- Confirm the wireless router is connected to the network correctly.
- Confirm the Wi-Fi of the smart devices is activated.
- Smart devices and ceiling fan should be connected to the same wireless router.

設置前

- 確認無線路由器已正確連接網路。
- 確認智慧設備已開啟 Wi-Fi。
- 智慧設備與吊扇應連接到同一個無線路由器上。

Trước khi cài đặt

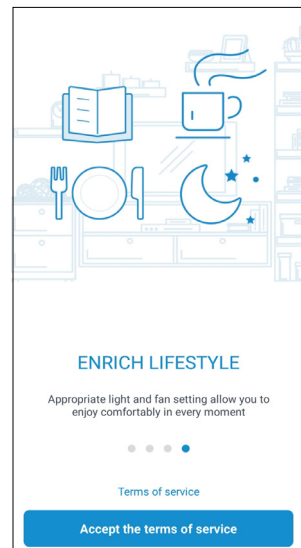
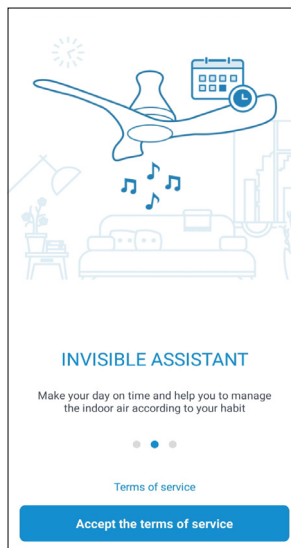
- Kiểm tra xem bộ định tuyến không dây có được nối mạng đúng cách không.
- Kiểm tra xem Wi-Fi của các thiết bị thông minh có được kích hoạt không.
- Các thiết bị thông minh và quạt trần cần được nối với cùng bộ định tuyến không dây.

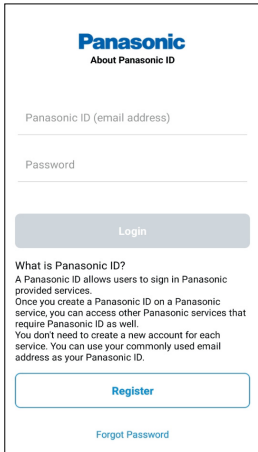
Get started on “Ceiling Fan” App / 開始使用 “Ceiling Fan” 應用程式 / Bắt đầu với Ứng Dụng “Ceiling Fan”

Before using the App, ensure to read the Terms of service. To continue, press “Accept the terms of service” button.

使用應用程式之前，請務必閱讀服務條款。請按 “Accept the terms of service” 鍵繼續。

Trước khi sử dụng Ứng Dụng, hãy đọc các Điều Khoản dịch vụ. Tiếp theo, ấn nút “Accept the terms of service”.





- For new user, press "Register" to register account. / 新用戶請按 "Register"，註冊帳戶。 / Đối với người dùng mới, ấn nút "Register" để đăng ký tài khoản.
- For registered user, login using your Panasonic ID and password. / 註冊使用者請使用 Panasonic ID 和密碼登錄。 / Đối với người dùng đã đăng ký, đăng nhập bằng Panasonic ID và mật khẩu.

■ Note / 備注 / Lưu ý:

- If enter wrong password several times, it will be locked for about an hour or more. / 如果密碼多次輸入錯誤，帳號會被鎖定约一个小时以上。 /
- Nếu nhập sai mật khẩu vài lần, tài khoản sẽ bị khóa trong khoảng 1 giờ hoặc nhiều hơn.

How to connect product to home network

如何將產品連接到家用網路

Cách kết nối sản phẩm với mạng gia đình

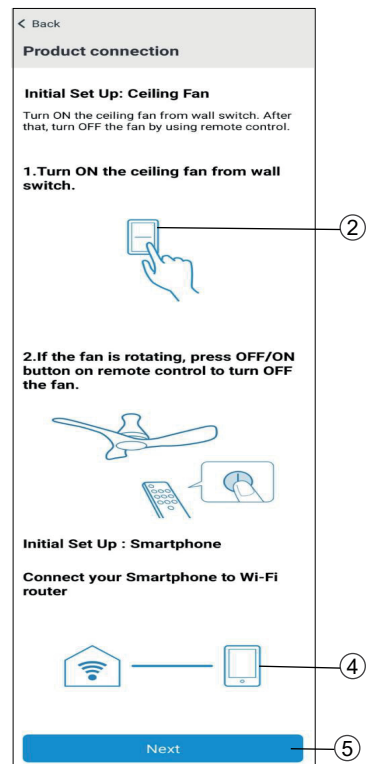
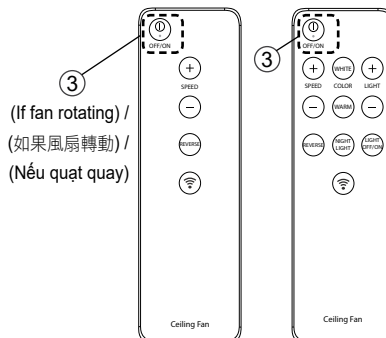
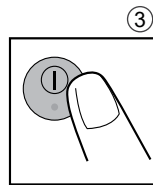
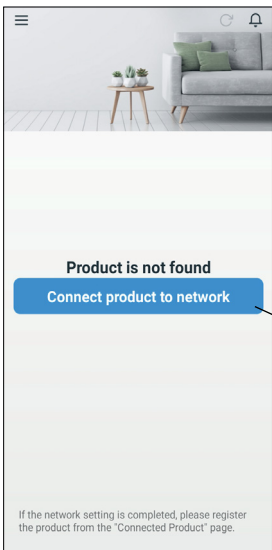
- ① After login, press "Connect product to network" to connect product.
- ② Switch ON the ceiling fan from the wall switch.
- ③ If the fan is rotating after the wall switch is ON, turn OFF the ceiling fan by pressing the OFF/ON button on remote control.
- ④ Before connecting smart devices to product, please ensure your smart devices have been connected to your Wi-Fi router.
- ⑤ Press "Next".


- ① 登錄後，按 "Connect product to network" 即可連接產品。
- ② 通過牆壁開關打開吊扇。
- ③ 如果打開牆壁開關，風扇轉動，請按遙控器上的 OFF/ON 鍵關閉吊扇。
- ④ 將智慧設備連接到產品之前，請確保智慧設備已經連接到 Wi-Fi 路由器。
- ⑤ 按 "Next"。

- ① Sau khi đăng nhập, ấn nút "Connect product to network" để kết nối sản phẩm.
- ② BẬT nguồn quạt trần từ công tắc gắn tường.
- ③ Nếu quạt quay sau khi bật công tắc gắn tường, tắt quạt trần bằng cách ấn nút OFF/ON.
- ④ Trước khi kết nối các thiết bị thông minh với sản phẩm, hãy chắc chắn rằng các thiết bị thông minh của bạn đã được kết nối với bộ định tuyến Wi-Fi.
- ⑤ Ấn nút "Next".


■ Note / 備注 / Lưu ý:

- This screen only appears during first time of ceiling fan network setup.
- For second ceiling fan network setup, please refer to page 13- ③ Connected product.
- 此畫面僅在首次設置吊扇網路時出現。
- 第二次設置吊扇網路，請參考第 13- ③ 頁已連接產品。
- Màn hình này chỉ xuất hiện trong lần đầu cài đặt mạng quạt trần.
- Đối với lần thứ hai cài đặt mạng quạt trần, xem trang 13- ③ Sản phẩm kết nối.



- ⑥ Long press the Remote Control  button for 5 seconds. The ceiling fan should start making beep sound and enter Wi-Fi setting mode.
- ⑦ Press "Yes" if the buzzer is beeping. Otherwise, press "No" to repeat from beginning step.

- ⑥ 長按遙控器  鍵 5 秒。吊扇開始發出蜂鳴聲，進入 Wi-Fi 設置模式。
- ⑦ 如果蜂鳴器在響，請按 "Yes"。否則按 "No" 從開始步驟重新開始。

- ⑥ Ấn và giữ nút Điều Khiển Từ Xa  trong 5 giây. Quạt trần phải bắt đầu phát ra tiếng bip, khi đó nhập chế độ cài đặt Wi-Fi.
- ⑦ Ấn nút "Yes" nếu còi phát ra tiếng bip. Nếu không, ấn nút "No" để lặp lại từ bước đầu tiên.

Two methods to connect product to network:

Method 1 WPS (Wi-Fi Protected Setup)

Press WPS button on Wi-Fi router until the connection established (Please refer your Wi-Fi router indication). Then, press "Next".

Method 2 AP (Access Point)

Press "No WPS button (Manual settings)" for access point set up. For detail Manual settings, please refer to page 8.

將產品連接到網路的兩種方法:

方法 1 WPS (Wi-Fi 保護設置)

按下 Wi-Fi 路由器上的 WPS 鍵直到建立連接 (請參考 Wi-Fi 路由器上的指示)。然後按 "Next"。

方法 2 AP (接入點)

按 "No WPS button (Manual settings)" 進入接入點設置。有關手動設置的詳細資訊，請見第 8 頁。

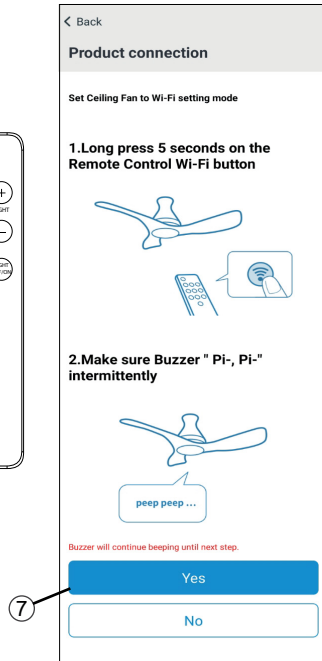
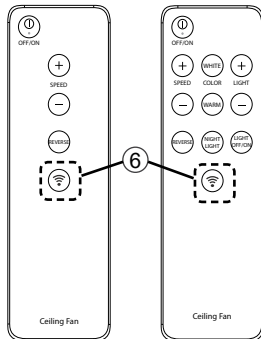
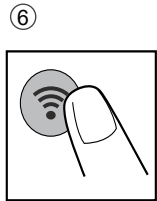
Hai phương pháp kết nối sản phẩm với mạng:

Phương Pháp 1 WPS (Cài Đặt Bảo Vệ Wi-Fi)

Ấn nút WPS trên bộ định tuyến Wi-Fi đến khi kết nối được thiết lập (Xem chỉ dẫn bộ định tuyến Wi-Fi của bạn). Sau đó, ấn nút "Next".

Phương Pháp 2 AP (Điểm Truy Cập)

Ấn nút "No WPS button (Manual settings)" để cài đặt điểm truy cập. Để biết thêm thông tin về Cài đặt thủ công, xem trang 8.



Connecting product to network Method 1 WPS (Wi-Fi Protected Setup)

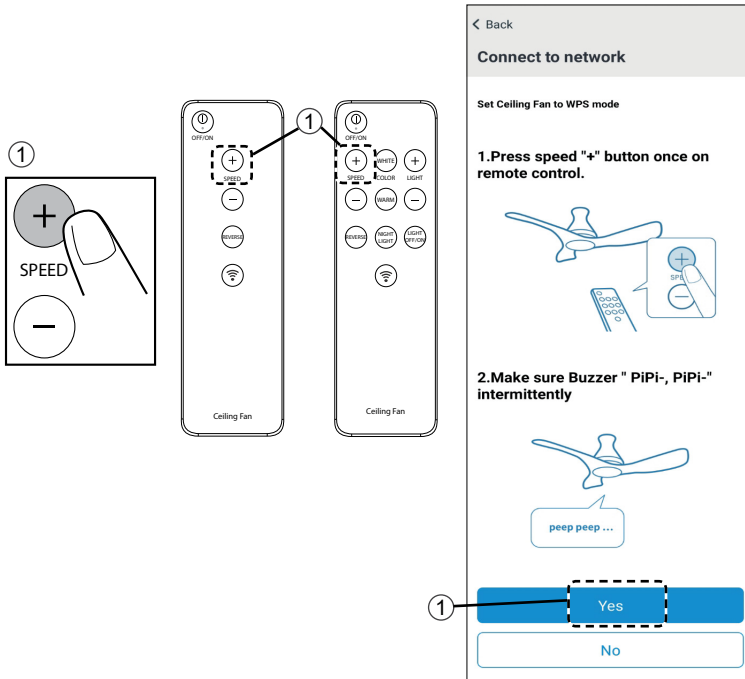
- ① Press the "Speed +" button on the Remote Control. Make sure the beep sound has changed pattern. Press "Yes" if the buzzer is beeping. Otherwise, press "No" and refer to note.
- ② If the buzzer have 5 seconds long beep sound, press "Yes". Otherwise, press "No".
- ③ Press "Next".
- ④ Refer Product Registration step on page 11 to continue.

連接產品到網路方法 1 WPS (Wi-Fi 保護設置)

- ① 按遙控器上的 "Speed +"。確認蜂鳴聲模式發生變化。如果蜂鳴器在響，請按 "Yes"。否則按 "No"，並請參考說明。
- ② 如果蜂鳴器發出 5 秒長的蜂鳴聲，按 "Yes"。否則按 "No"。
- ③ 按 "Next"。
- ④ 請參考第 11 頁的產品註冊步驟繼續。

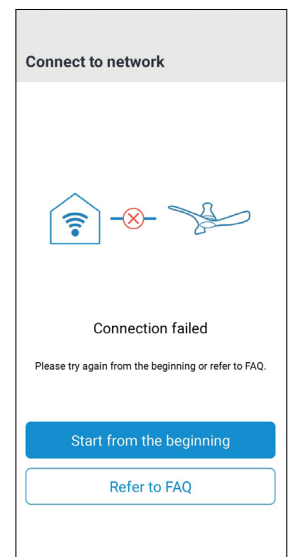
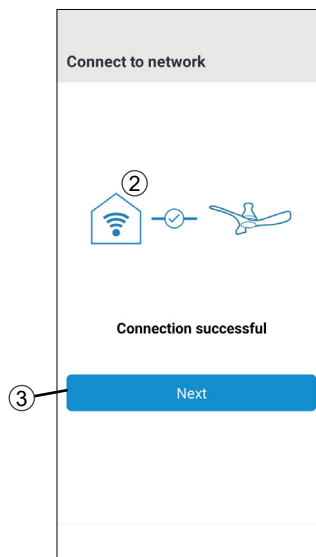
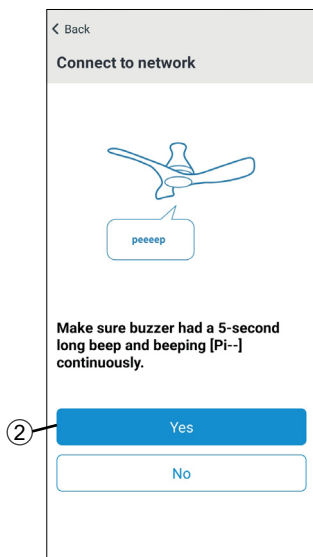
Kết nối sản phẩm với mạng theo Phương Pháp 1 WPS (Cài Đặt Bảo Vệ Wi-Fi)

- ① Ấn nút "Speed +" trên Điều Khiển Từ Xa. Kiểm tra xem âm thanh bíp có thay đổi kiểu không. Ấn nút "Yes" nếu còi phát ra tiếng bíp. Nếu không, ấn nút "No" và xem phần chú thích.
- ② Nếu còi phát ra tiếng bíp dài hơn 5 giây, ấn nút "Yes". Nếu không, ấn nút "No".
- ③ Ấn nút "Next".
- ④ Xem bước Đăng Ký Sản Phẩm trên trang 11 để tiếp tục.



■ Note / 備注 / Lưu ý:

- Below screen appears if press "No" on ① or "No" on ②. Repeat from beginning step or refer to FAQ.
- If connection attempts failed several times, restart your router.
- 如果在步驟 ① 中按 "No" 或在步驟 ② 中按 "No" 鍵，會出現以下畫面。請從開始步驟重複，或參考常見問題。
- 如果多次連接失敗，請重新啟動路由器。
- Màn hình dưới xuất hiện nếu ấn nút "No" trên ① hoặc "No" trên ②. Lập lại từ bước đầu hoặc xem phần Hỏi & Đáp.
- Nếu sau vài lần vẫn không kết nối được, khởi động lại bộ định tuyến.



Connecting product to network Method 2 AP (Access Point)

• Continue from page 6 Method 2. If the WPS function is not available, connect the ceiling fan through manual setting.

① Ensure that the smart devices are connected to the desired network. Then press "Next".

■ Note:

- Only 2.4 GHz can be used.
- ② Enable the location access. Follow phone setting to enable the location access.

連接產品到網路方法 2 AP (接入點)

• 續第 6 頁之方法 2。如果沒有 WPS 功能，請手動連接吊扇。

① 請確保智慧設備已接入所需網路。然後按 "Next"。

■ 備注:

- 只能使用 2.4 GHz。
- ② 啟用位置訪問。按照電話設置來啟用位置訪問。

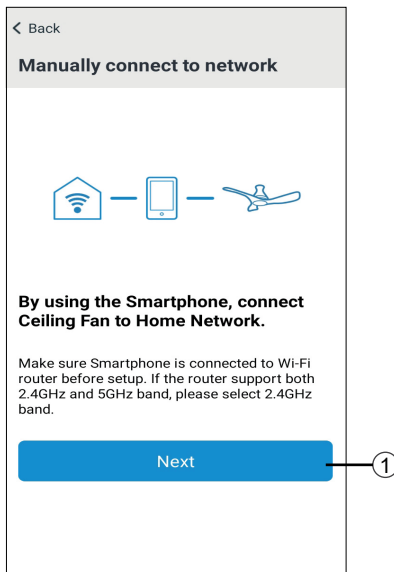
Kết nối sản phẩm với mạng theo Phương Pháp 2 AP (Điểm Truy Cập)

• Tiếp tục từ trang 6 theo Phương Pháp 2. Nếu không có chức năng WPS, kết nối quạt trần thông qua cài đặt thủ công.

① Kiểm tra xem các thiết bị thông minh được kết nối với mạng mong muốn không. Sau đó ấn nút "Next".

■ Lưu ý:

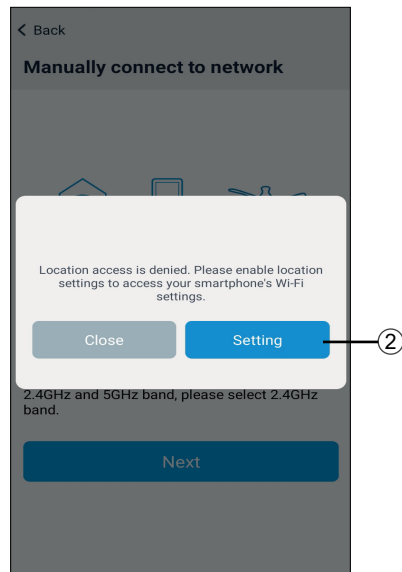
- Chỉ có thể sử dụng 2.4 GHz.
- ② Kích hoạt truy cập địa điểm. Tuân thủ cài đặt điện thoại để kích hoạt truy cập địa điểm.



■ Note / 備注 / Lưu ý:

- Only 2.4GHz can be used.
- 只能使用 2.4 GHz。
- Chỉ có thể sử dụng 2.4 GHz.

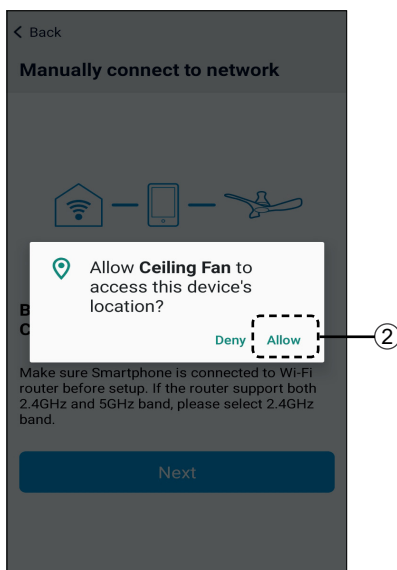
<Android>



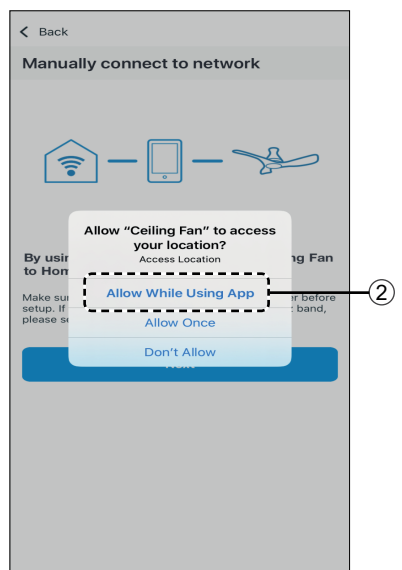
■ Note / 備注 / Lưu ý:

- Only for first time setup.
- 僅用於首次設置。
- Chỉ dành cho lần cài đặt đầu tiên.

<Android>



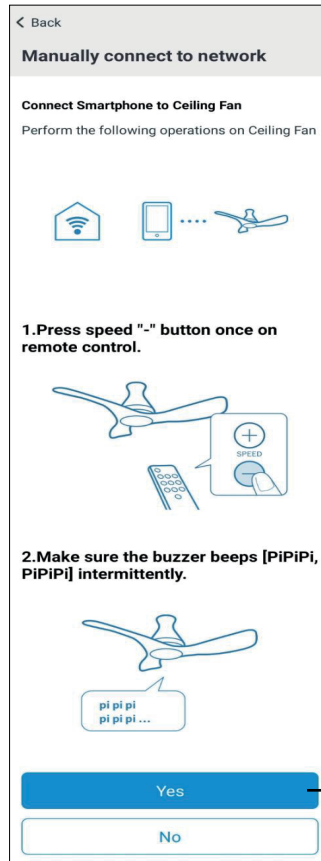
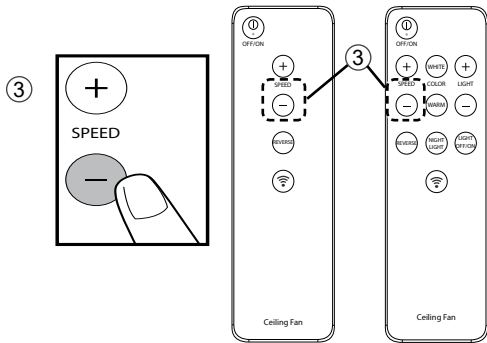
<iOS>



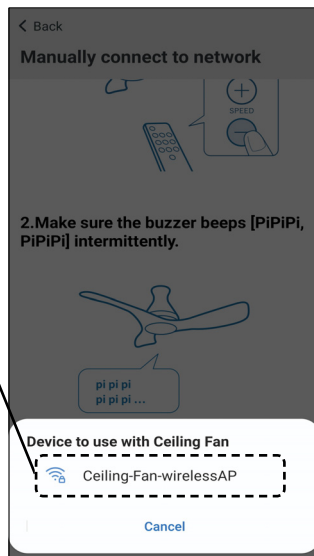
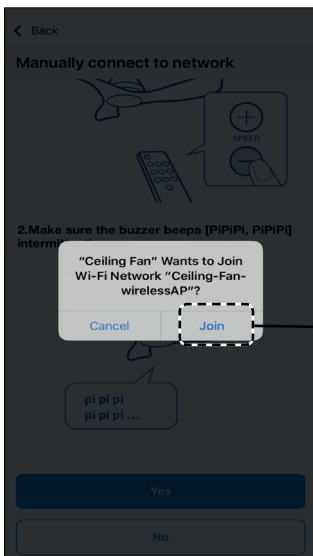
- ③ Press the "Speed -" button on the Remote Control. Make sure the beep sound is change pattern. Then press "Yes". Otherwise, press "No".
- ④ For certain smart devices which prompt for Wi-Fi connection, press "Join" or select "Ceiling-Fan-wirelessAP" from the Wi-Fi list.
For other smart devices which do not prompt for Wi-Fi connection, please proceed to step ⑤.
- ⑤ Press "Next".

- ③ 按遙控器上的 "Speed -"。確認蜂鳴聲是變化模式。然後按 "Yes"。否則按 "No"。
- ④ 對於提示 Wi-Fi 連接的智慧設備，請按 "Join" 或在 Wi-Fi 列表中選擇 "Ceiling-Fan-wirelessAP"。
對於不提示 Wi-Fi 連接的智慧設備，請執行步驟 ⑤。
- ⑤ 按 "Next"。

- ③ Ấn nút "Speed -" trên Điều Khiển Từ Xa. Kiểm tra xem tiếng bíp có thay đổi kiểu không. Sau đó, ấn nút "Yes". Nếu không, ấn nút "No".
- ④ Đối với một số thiết bị thông minh có nhắc kết nối Wi-Fi, ấn nút "Join" hoặc chọn "Ceiling-Fan-wirelessAP" từ danh mục Wi-Fi.
Đối với các thiết bị thông minh khác không nhắc kết nối Wi-Fi, thực hiện bước ⑤.
- ⑤ Ấn nút "Next".

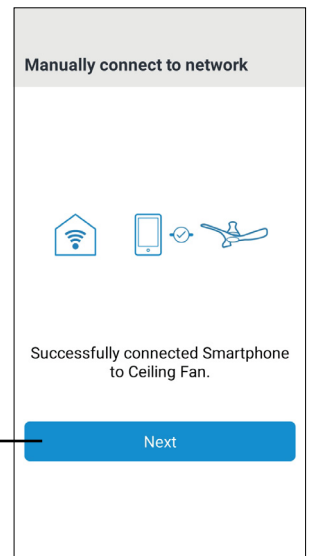


- ④ <Option for Wi-Fi connection> / <Wi-Fi 連接選項> / <Tùy chọn kết nối Wi-Fi>



■ Note / 備注 / Lưu ý:

- If this takes more than 10 seconds, please turn off your mobile data.
- 如果耗時超過 10 秒，請關閉移動資料。
- Nếu quá trình kéo dài quá 10 giây, tắt dữ liệu di động của bạn.

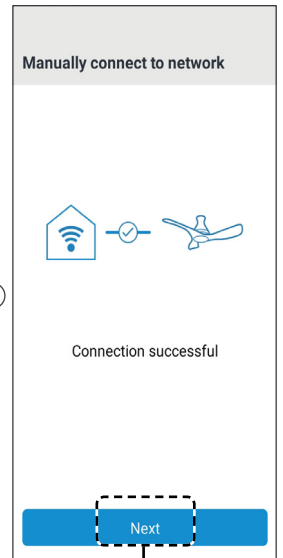
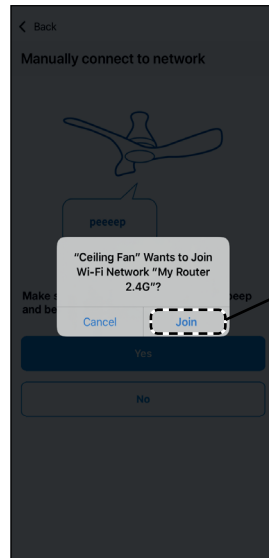
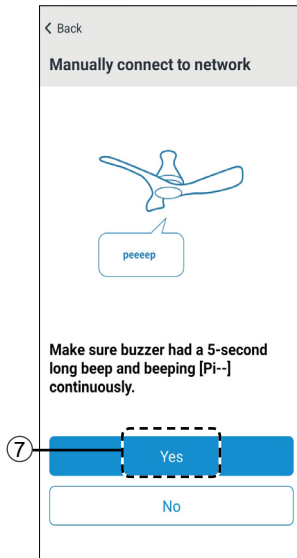
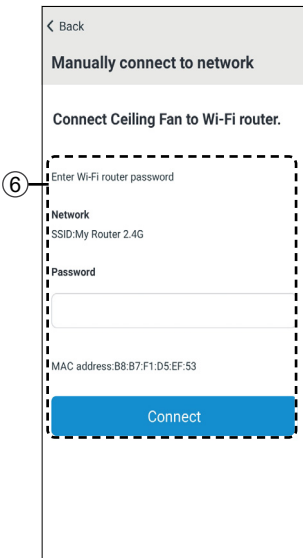


- ⑥ Please ensure the SSID is correct. Enter the password of Wi-Fi router. Then, press "Connect".
- ⑦ Confirm that beeping changes to a 5-second long beep. Then, press "Yes". Otherwise, press "No".
- ⑧ Only for iOS: Connect smart devices connection back to the Wi-Fi router. Press "Join". (Android user can go to step ⑨).
- ⑨ Press "Next". Refer Product Registration step on page 11 to continue.

- ⑥ 請確保 SSID 正確。輸入 Wi-Fi 路由器密碼。然後按 "Connect"。
- ⑦ 確認蜂鳴聲變為 5 秒長的嗶嗶聲。然後，按 "Yes"。否則按 "No"。
- ⑧ 僅適用於 iOS: 將智慧設備連接到 Wi-Fi 路由器。按 "Join"。(Android 使用者可以跳轉到步驟 ⑨)。
- ⑨ 按 "Next"。請參考第 11 頁的產品註冊步驟繼續。

- ⑥ 請確保 SSID 是正確的。輸入 Wi-Fi 路由器的密碼。然後，按 "Connect"。
- ⑦ 檢查蜂鳴聲是否已變為 5 秒長的嗶嗶聲。然後，按 "Yes"。如果沒有，按 "No"。
- ⑧ 僅適用於 iOS: 將智慧設備重新連接到 Wi-Fi 路由器。按 "Join"。(Android 用戶可以跳轉到步驟 ⑨)。
- ⑨ 按 "Next"。請參閱第 11 頁的註冊步驟。

<iOS>

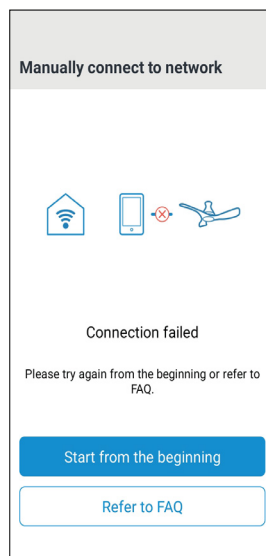


■ Note / 備注 / Lưu ý:

- SSID = Wi-Fi network name
Send Wi-Fi connection settings from smart devices to ceiling fan.
- SSID = Wi-Fi 網路名稱
將智慧設備的 Wi-Fi 連接設置發送到吊扇上。
- SSID = Tên mạng Wi-Fi
Gửi các cài đặt kết nối Wi-Fi từ các thiết bị thông minh đến quạt trần.

■ Note / 備注 / Lưu ý:

- Below screen appears if press "No" on ③ or "No" on ⑦. Repeat from beginning step or refer to FAQ.
- If this screen appears during any other operation, please try again from the beginning or refer to FAQ.
- 如果在步驟 ③ 中按 "No" 或在步驟 ⑦ 中按 "No" 鍵，會出現以下畫面。請從開始步驟重複，或參考常見問題。
- 如果在其他操作過程中出現此介面，請從頭再試或參考常見問題解答。
- Màn hình dưới xuất hiện nếu ấn nút "No" trên ③ hoặc "No" trên ⑦. Lập lại từ bước đầu hoặc xem phần Hỏi & Đáp.
- Nếu màn hình này xuất hiện trong bất cứ thao tác nào khác, hãy thử lại từ đầu hoặc xem phần Hỏi & Đáp.



How to register product to smart devices

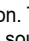
如何在智慧設備上註冊產品

Cách đăng ký sản phẩm với các thiết bị thông minh

Product registration in the App

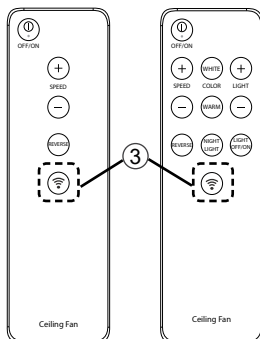
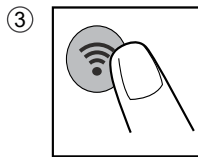
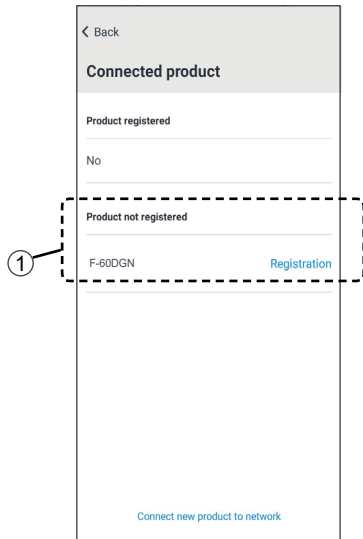
■ Note :

- Products need to be registered before using "Ceiling Fan" App.

- ① Select one product to register by pressing "Registration".
- ② Press "Yes" if the buzzer is beeping. Otherwise, press "No" to follow the App to set ceiling fan to enter Wi-Fi setting mode.
- ③ Press the Remote Control  button. The ceiling fan should change beeping sound to indicate that ceiling fan is connecting to the App. Then, press "Yes". Otherwise, press "No".

■ Note :


- This may take up to a few minutes.



在應用程式上註冊產品

■ 備注:

- 在使用 "Ceiling Fan" 應用程式前需要註冊產品。

- ① 按 "Registration" 選擇一個要註冊的產品。
- ② 如果蜂鳴器在響, 請按 "Yes"。否則按 "No", 跟隨應用程式設置吊扇, 進入 Wi-Fi 設置模式。
- ③ 按遙控器  鍵。吊扇應改變蜂鳴聲, 以表明吊扇正在連接到應用程式。然後按 "Yes"。否則按 "No"。


■ 備注:

- 這可能需要幾分鐘。

Đăng ký sản phẩm trong Ứng Dụng

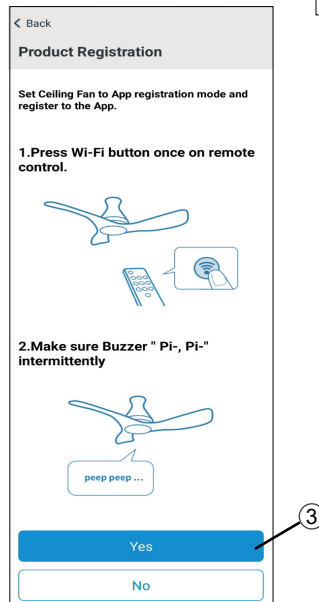
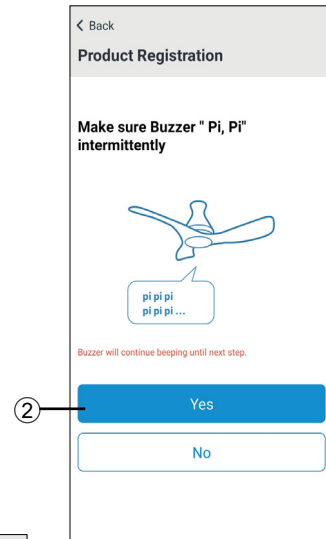
■ Lưu ý:

- Các sản phẩm cần được đăng ký trước khi sử dụng Ứng Dụng "Ceiling Fan".

- ① Chọn một sản phẩm để đăng ký bằng cách ấn nút "Registration".
- ② Ấn nút "Yes" nếu còi phát ra tiếng bíp. Nếu không, ấn nút "No" để tuân thủ Ứng Dụng và chỉnh quạt trần để nhập chế độ cài đặt Wi-Fi.
- ③ Ấn nút Điều Khiển Từ Xa . Quạt trần phải thay đổi tiếng bíp để cho thấy quạt trần đang kết nối với Ứng Dụng. Sau đó, ấn nút "Yes". Nếu không, ấn nút "No".

■ Lưu ý:

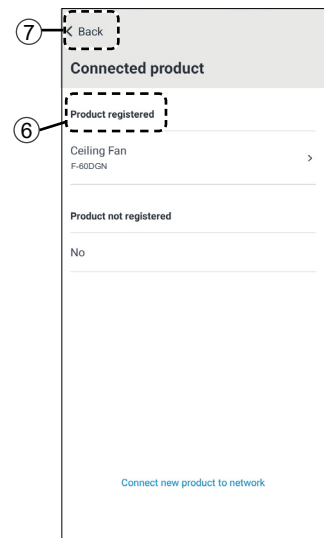
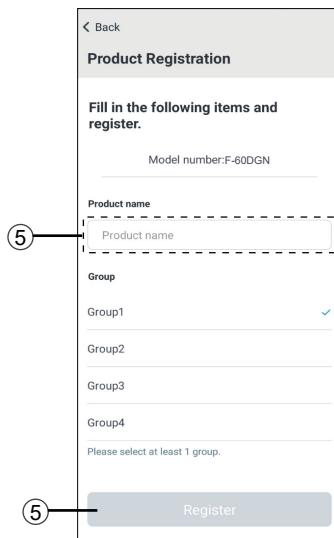
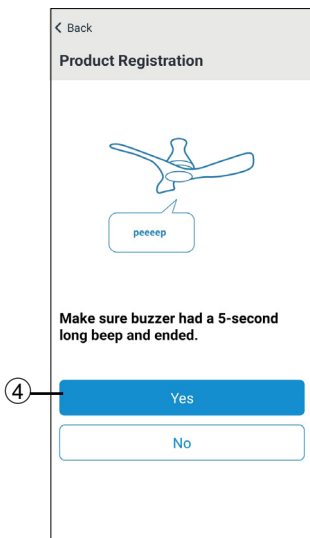
- Quá trình này có thể mất vài phút.



- ④ Confirm that beeping changes to a 5-second long beep. After that, beeping should stop. Then press “Yes”. Otherwise, press “No”.
- **Note :**
- This may take up to a few minutes.
- ⑤ When registration page appear, type the Product name, select at least 1 group to register, then press “Register”.
- ⑥ Once the registration is complete, the registered product appears under “Product registered”.
- ⑦ Press “Back” to return to Main screen. You can control the ceiling fan through the App now.

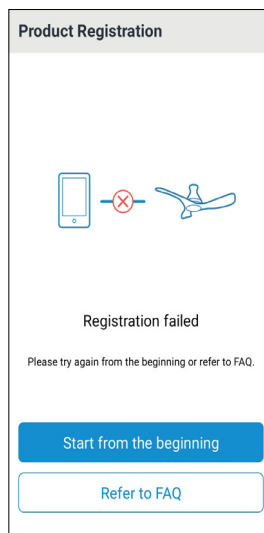
- ④ 請確認蜂鳴聲變為 5 秒長的嗶嗶聲。此後，蜂鳴聲應該停止。然後按 “Yes”。否則按 “No”。
- **備注:**
- 這可能需要幾分鐘。
- ⑤ 出現註冊頁面時，請輸入產品名稱並選擇至少 1 組進行註冊，然後按 “Register”。
- ⑥ 註冊完成後，已註冊產品將顯示在 “Product registered” 下。
- ⑦ 按 “Back” 返回主介面。現在您可以通過應用程式控制吊扇了。

- ④ Kiểm tra xem tiếng bíp có chuyển thành tiếng bíp dài 5 giây không. Sau đó, tiếng bíp sẽ dừng lại. Sau đó, ấn nút “Yes”. Nếu không, ấn nút “No”.
- **Lưu ý:**
- Quá trình này có thể mất vài phút.
- ⑤ Khi trang đăng ký xuất hiện, gõ tên Sản Phẩm, chọn ít nhất 1 nhóm để đăng ký, sau đó ấn nút “Register”.
- ⑥ Khi hoàn tất đăng ký, sản phẩm được đăng ký xuất hiện dưới tiêu đề “Product registered”.
- ⑦ Ấn nút “Back” để trở lại màn hình Chính. Bây giờ, bạn có thể điều khiển quạt trần thông qua Ứng Dụng.



■ **Note / 備注 / Lưu ý:**

- Below screen appears if press “No” on ③ or “No” on ④. Repeat from beginning step or refer to FAQ.
- If this screen appears during any other operation, please try again from the beginning or refer to FAQ.
- 如果在步驟 ③ 中按 “No” 或在步驟 ④ 中按 “No” 鍵，會出現以下畫面。請從開始步驟重複，或參考常見問題。
- 如果在其他操作過程中出現此介面，請從頭再試或參考常見問題解答。
- Màn hình dưới xuất hiện nếu ấn nút “No” trên ③ hoặc “No” trên ④. Lập lại từ bước đầu hoặc xem phần Hỏi & Đáp.
- Nếu màn hình này xuất hiện trong bất cứ thao tác nào khác, hãy thử lại từ đầu hoặc xem phần Hỏi & Đáp.



Use the "Ceiling Fan" App

- ① Press ≡ button to open the Main Menu.
- ② Main Menu will display.
 - Connected product - To check the product status.
 - Group - To check grouping status.
 - Help - App assistance including FAQ, instruction manual.
- ③ Connected product
 - (a) Under Connected Product tab, to connect new product, press "Connect new product to network".
 - (b) Product registered and product not registered are shown. Press on any registered product to view the details such as "Name", "Model Number", "Serial number".
 - (c) Product and Lighting preset* can be renamed. Group selection can be changed also.
 - (d) Registered product could be removed from the App by pressing "Delete product" button.

If the product is registered by one or more user accounts, schedule setting will remain. If there is no other registered account, schedule setting will be deleted. This will not reset the network setting.

■ **Note :**

 - To reset network and ceiling fan schedule settings please refer page 26.

使用 "Ceiling Fan" 應用程式

- ① 按 ≡ 鍵打開主菜單。
- ② 顯示主功能表。
 - Connected product - 檢查產品狀態。
 - Group - 查看組狀態。
 - Help - 應用程式的明, 包括常見問題和使用手冊。
- ③ Connected product
 - (a) 在 "Connected Product" 選項卡下, 按 "Connect new product to network" 來連接新產品。
 - (b) 顯示已註冊產品和未註冊產品。點擊任何已註冊產品, 可查看 "名稱"、"型號"、"產品序號" 等詳細資訊。
 - (c) 可重命名產品和照明預設*。也可以更改組。
 - (d) 點擊 "Delete product" 鍵可以將已註冊產品從應用程式中刪除。如果一個或多個使用者帳戶註冊了該產品, 則保留計畫設置。如果沒有其他註冊帳號, 計畫設置將被刪除。這不會重定網路設置。

■ **備注:**

 - 如需重設網路和吊扇計畫設置, 請參閱第 26 頁。

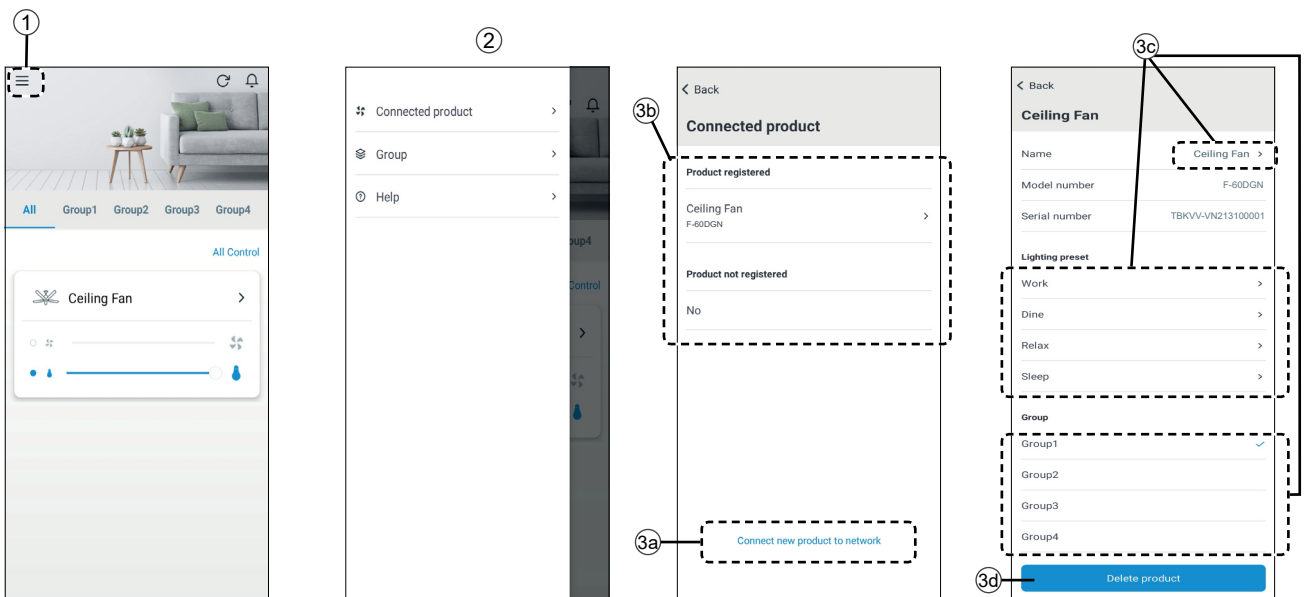
Sử dụng Ứng Dụng "Ceiling Fan"

- ① Ấn nút ≡ để mở Menu Chính.
- ② Menu Chính sẽ hiển thị.
 - Connected product - Để kiểm tra trạng thái sản phẩm.
 - Group - Để kiểm tra trạng thái nhóm.
 - Help - Hỗ trợ Ứng Dụng bao gồm Hỏi & Đáp, hướng dẫn sử dụng.
- ③ Connected product
 - (a) Trong thẻ "Connected Product", để kết nối sản phẩm mới, ấn nút "Connect new product to network".
 - (b) Sản phẩm đã đăng ký và sản phẩm không được đăng ký được hiển thị. Ấn vào bất cứ sản phẩm đã đăng ký nào để xem thông tin chi tiết như "Tên", "Số Model", "Số Seri".
 - (c) Có thể đặt tên lại cho cài đặt trước Sản Phẩm và Đèn*. Lựa chọn nhóm cũng có thể thay đổi.
 - (d) Có thể gỡ sản phẩm khỏi Ứng Dụng bằng cách ấn nút "Delete product". Nếu sản phẩm được một hoặc nhiều tài khoản người dùng đăng ký, cài đặt lịch vẫn còn tác dụng. Nếu không có tài khoản đăng ký nào khác, cài đặt lịch sẽ bị xóa. Thao tác này sẽ không chỉnh lại cài đặt mạng.

■ **Lưu ý:**

 - Để cài đặt lại mạng và các cài đặt lịch quạt trần, xem trang 26.

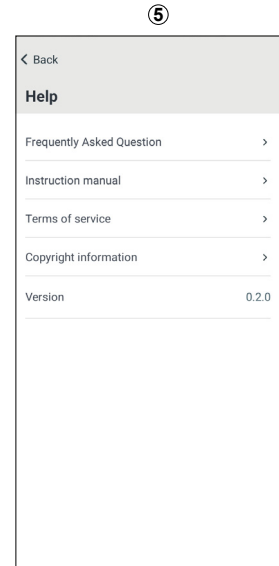
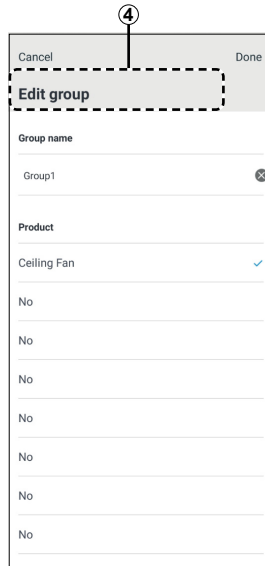
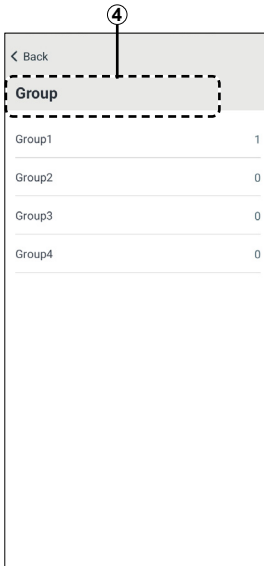
* For F-60DGN & F-48DGL only /
 * 僅適用於 F-60DGN & F-48DGL /
 * Chỉ dành cho F-60DGN & F-48DGL

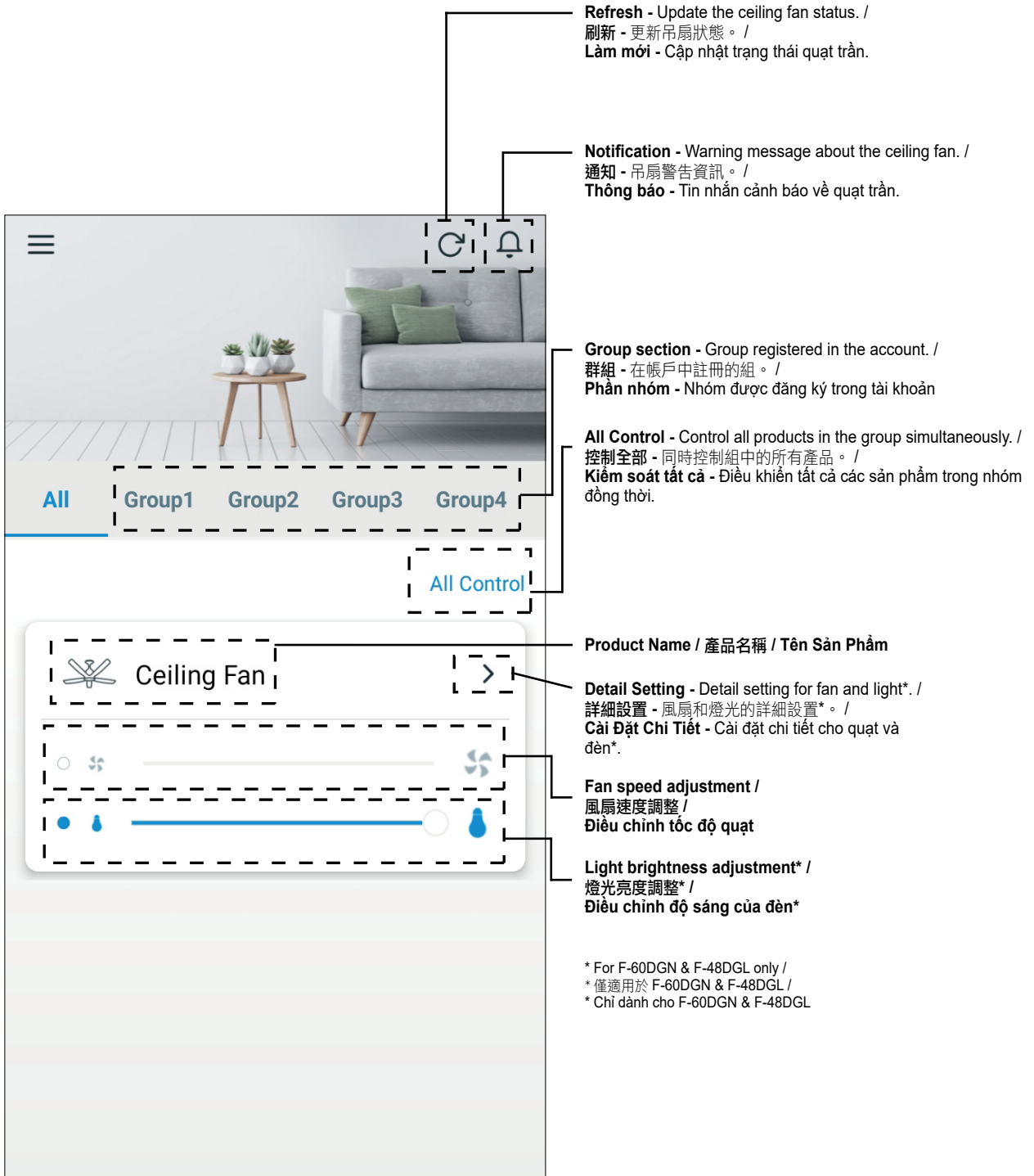


- ④ Group
Select designated product that like to group together. The group name can be changed under “Edit group”.
- ⑤ Help
For any inquiries, on Help page, user can access to Frequently Asked Question, Instruction manual, Terms of service, Copyright information and view the App version as well.

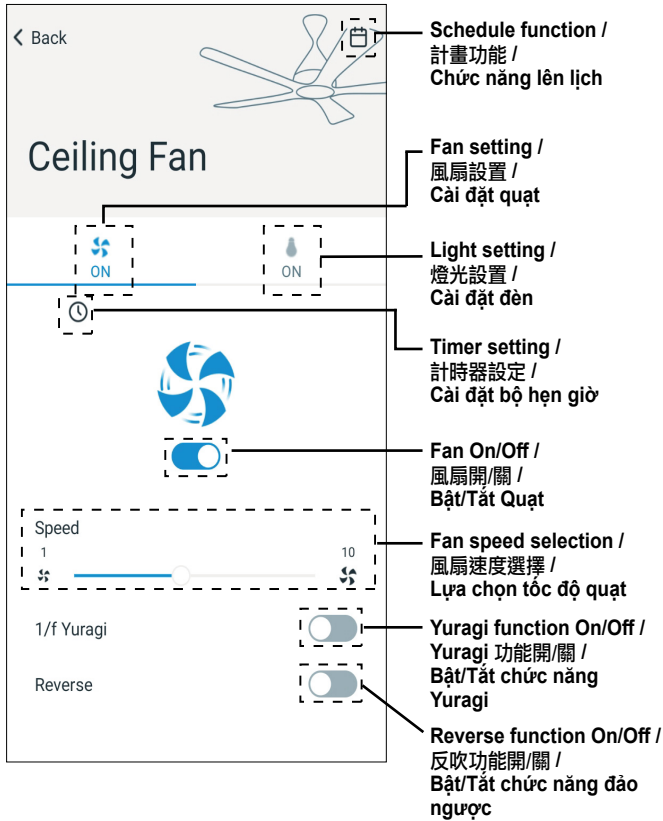
- ④ Group
選擇想要組合在一起的特定產品。可以在“Edit group”下更改組名。
- ⑤ Help
如有任何問題，用戶可以在“Help”頁面上訪問“常見問題”、“使用手冊”、“服務條款”、“版權資訊”，並查看附錄程式版本。

- ④ Group
Chọn sản phẩm chỉ định có thể nhóm cùng nhau. Có thể thay đổi tên nhóm theo tiêu đề “Edit group”.
- ⑤ Help
Để được giải đáp mọi thắc mắc, trên trang “Help”, người dùng có thể truy cập thông tin Câu Hỏi Thường Gặp, Hướng dẫn sử dụng, Điều khoản dịch vụ, Bản quyền và xem phiên bản Ứng Dụng.

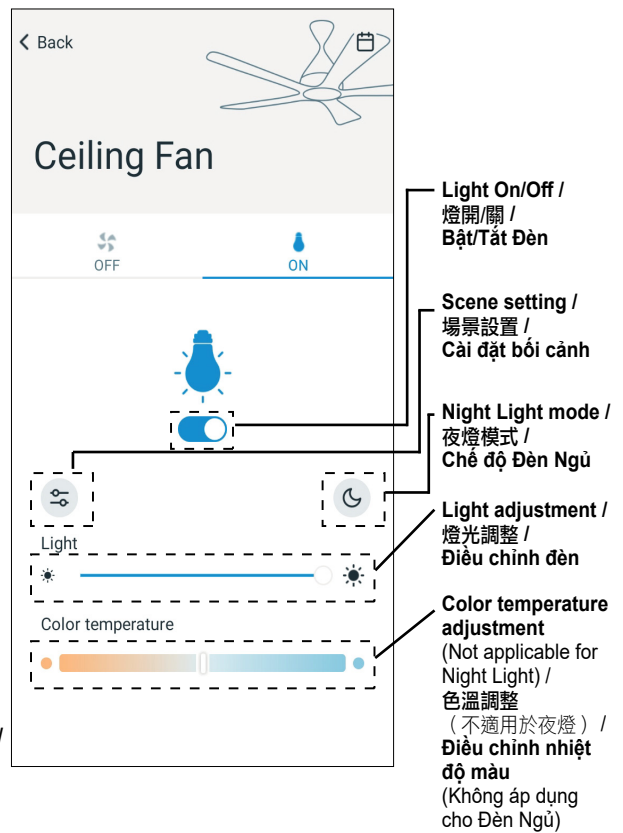




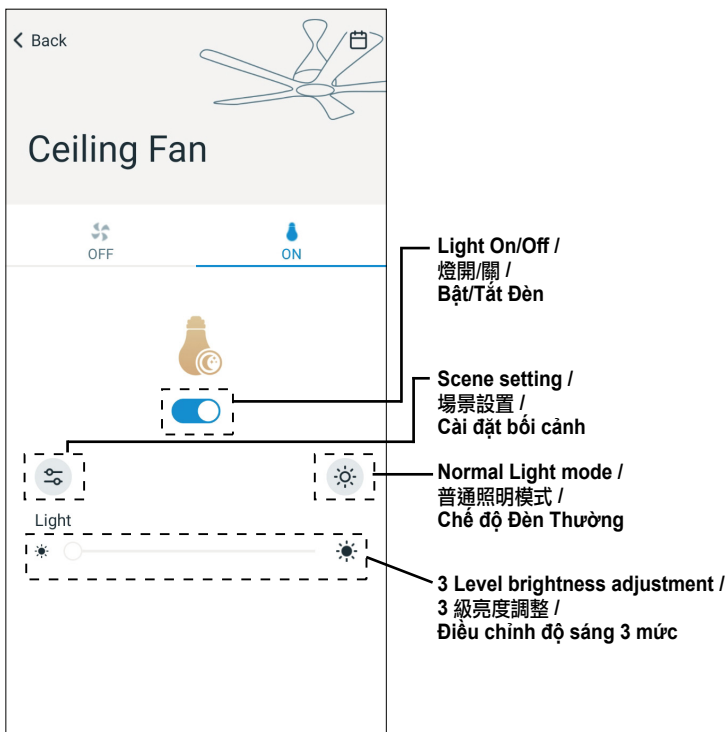
Fan Setting / 風扇設置 / Cài Đặt Quạt



Light Setting* / 燈光設置* / Cài đặt đèn*

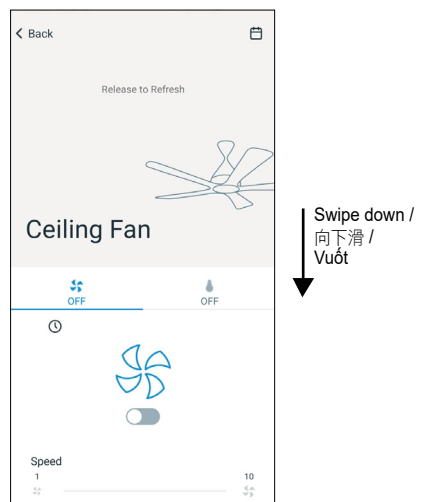


Night Light Setting* / 夜燈設置* / Cài Đặt Đèn Ngủ*



■ Note / 備注 / Lưu ý:

- After perform setting using remote control or by another smart devices, swipe down the screen and release to update the ceiling fan status.
- 使用遙控器或其他智慧設備完成設置後，可通過向下滑動螢幕來更新吊扇狀態。
- Sau khi thực hiện cài đặt bằng điều khiển từ xa hoặc bằng các thiết bị thông minh khác, vuốt màn hình và thả ra để cập nhật trạng thái quạt trần.



* For F-60DGN & F-48DGL only /
* 僅適用於 F-60DGN & F-48DGL /
* Chỉ dành cho F-60DGN & F-48DGL

Group Control Setting

• User can control all registered ceiling fans with one operation.

- 1 Press "All Control" button at main page.
- 2 Choose the Fan or Light* setting (can choose to set Group control with fan only or light only or both).
- 3 Press the "Operation" button to enable Group control mode.
- 4 Set the setting (page 16) based on preferences.
- 5 Press "Apply".

組控制設置

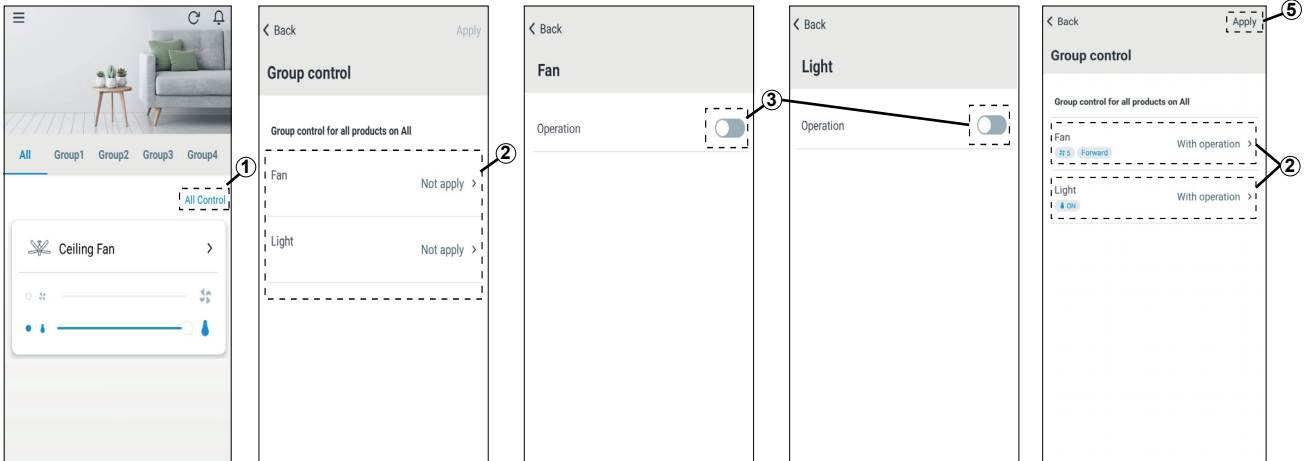
• 用戶可以通過一次操作來控制所有已註冊吊扇。

- 1 在主頁上按 "All Control" 鍵。
- 2 選擇風扇或燈光* 設置 (可以只對風扇或燈進行組控制, 或對二者同時進行組控制)。
- 3 按 "Operation" 按鈕啟用組控制模式。
- 4 根據偏好進行設置 (第 16 頁)。
- 5 按 "Apply"。

Cài Đặt Điều Khiển Nhóm

• Người dùng có thể điều khiển tất cả các quạt trần đã đăng ký bằng một thao tác.

- 1 Ấn nút "All Control" ở trang chủ.
- 2 Chọn cài đặt Quạt hoặc Đèn* (có thể chọn cài đặt điều khiển Nhóm bằng quạt hoặc đèn hoặc cả hai).
- 3 Ấn nút "Operation" để kích hoạt chế độ điều khiển Nhóm.
- 4 Chính mặc định (trang 16) dựa vào các ưu tiên.
- 5 Ấn nút "Apply".



Scene Setting*

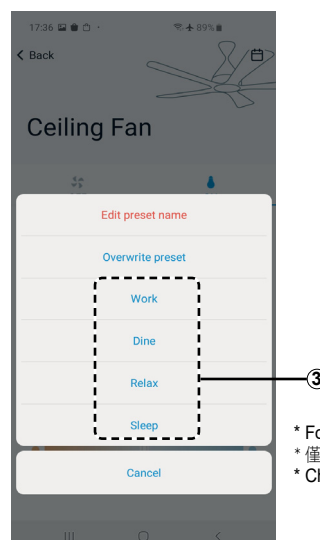
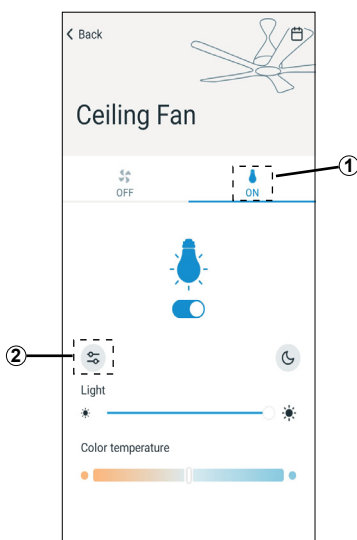
- 1 Press light setting.
- 2 Press the scene setting.
- 3 Select one of scene setting.

場景設置*

- 1 按燈光設置。
- 2 按場景設置。
- 3 選擇一個場景設置。

Cài Đặt Bối Cảnh*

- 1 Ấn nút cài đặt đèn.
- 2 Ấn nút cài đặt bối cảnh.
- 3 Chọn một cài đặt bối cảnh.

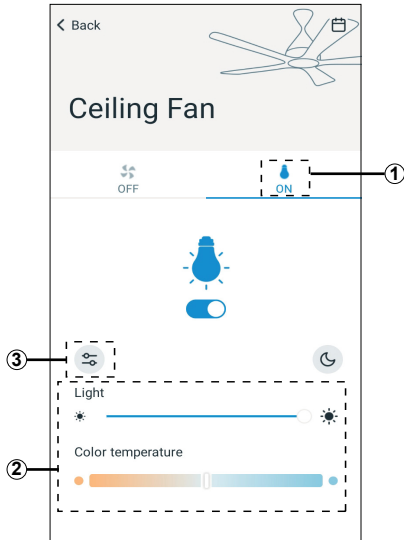


* For F-60DGN & F-48DGL only /
* 僅適用於 F-60DGN & F-48DGL /
* Chỉ dành cho F-60DGN & F-48DGL

Scene Setting* (continue from page 17)

• User can customize scene setting.

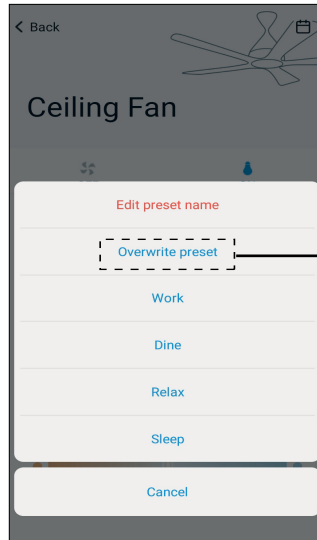
- ① Press light setting.
- ② Adjust the light setting according to preference.
- ③ Press the scene setting.
- ④ Press "Overwrite preset".
- ⑤ Select one of the scene setting to be replaced.



場景設置* (續第 17 頁)

• 用戶可以自訂場景設置。

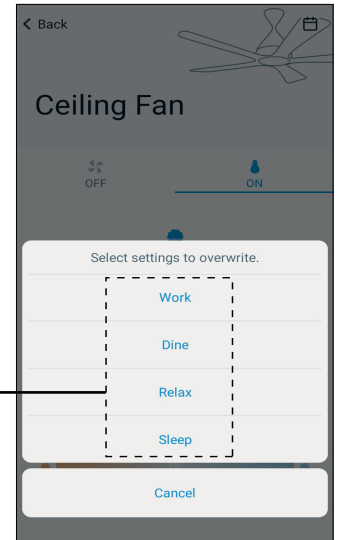
- ① 按燈光設置。
- ② 根據偏好調整燈光設置。
- ③ 按場景設置。
- ④ 按 "Overwrite preset"。
- ⑤ 選擇一個要替換的場景設置。



Cài Đặt Bối Cảnh* (tiếp tục từ trang 17)

• Người dùng có thể tùy chỉnh cài đặt bối cảnh.

- ① Ấn nút cài đặt đèn.
- ② Điều chỉnh cài đặt đèn theo ưu tiên.
- ③ Ấn nút cài đặt bối cảnh.
- ④ Ấn nút "Overwrite preset".
- ⑤ Chọn một cài đặt bối cảnh cần thay thế.



• To edit preset name of scene.

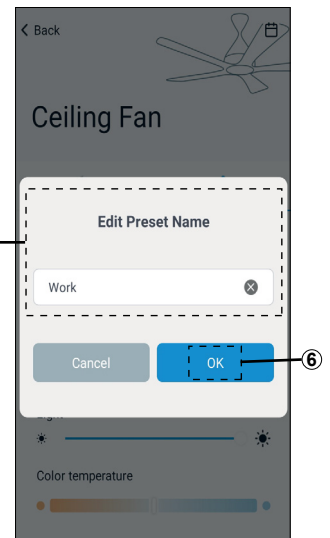
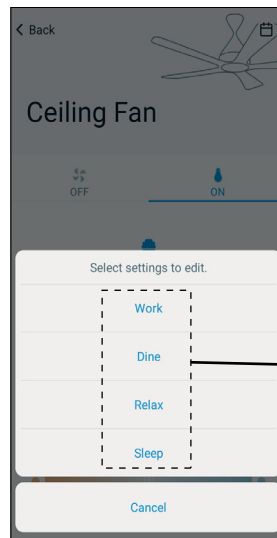
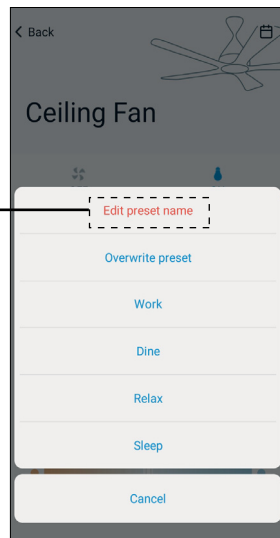
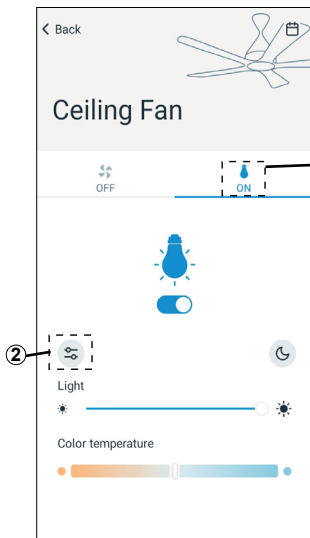
- ① Press light setting.
- ② Press scene setting.
- ③ Select "Edit preset name".
- ④ Select which scene to be renamed.
- ⑤ Enter new scene name.
- ⑥ Press "OK".

• 編輯場景的預設名稱。

- ① 按燈光設置。
- ② 按場景設置。
- ③ 選擇 "Edit preset name"。
- ④ 選擇要重命名的場景。
- ⑤ 輸入新的場景名稱。
- ⑥ 按 "OK"。

• Để biên tập tên bối cảnh cài đặt sẵn.

- ① Ấn nút cài đặt đèn.
- ② Ấn nút cài đặt bối cảnh.
- ③ Chọn "Edit preset name".
- ④ Chọn bối cảnh cần đặt tên lại.
- ⑤ Nhập tên bối cảnh mới.
- ⑥ Ấn nút "OK".



Timer Setting

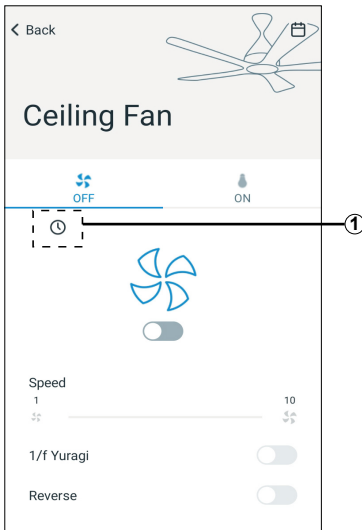
- Timer setting is only applicable for fan function.

To set the ON timer

■ Note :

- ON Timer can only be activated when ceiling fan is OFF.

- ① Press timer function button “🕒”.
- ② Set the required hours and minutes for the fan to turn ON.
- ③ Select the default melody for the ceiling fan when it is turned ON.
- ④ Press “Done”.



計時器設定

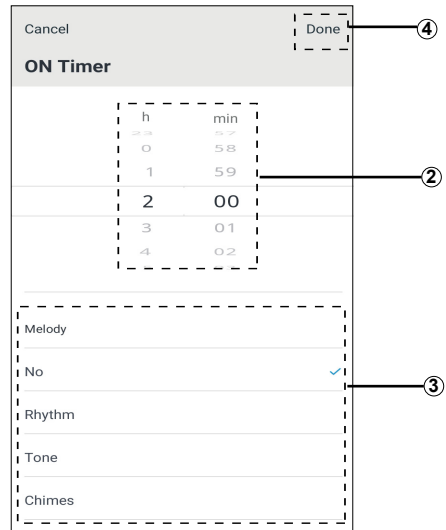
- 計時器設置僅適用於風扇功能。

計時器開啟設置

■ 備注:

- 僅在吊扇關閉時，方可啟動計時器開啟。

- ① 按計時器功能按鈕“🕒”。
- ② 設置打開風扇的時和分。
- ③ 選擇吊扇開啟時的默認旋律。
- ④ 按“Done”。



Cài Đặt Bộ Hẹn Giờ

- Cài đặt bộ hẹn giờ chỉ áp dụng cho chức năng quạt.

Để cài đặt bộ hẹn giờ BẬT

■ Lưu ý:

- Chỉ có thể kích hoạt Bộ Hẹn Giờ BẬT khi quạt trần TẮT.

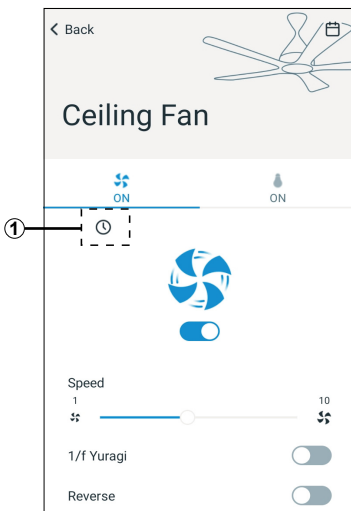
- ① Ấn nút chức năng bộ hẹn giờ “🕒”.
- ② Cài đặt giờ và phút theo yêu cầu để quạt BẬT.
- ③ Chọn giai điệu mặc định cho quạt trần khi quạt BẬT.
- ④ Ấn nút “Done”.

To set the OFF timer

■ Note :

- OFF Timer can only be activated when ceiling fan is ON.

- ① Press timer function button “🕒”.
- ② Set the required hours and minutes for the fan to turn OFF.
- ③ Enable SLEEP MODE function.(Optional) (Sleep mode explanation at page 20)
- ④ Press “Done”.



計時器關閉設置

■ 備注:

- 僅在吊扇開啟時，方可啟動計時器關閉。

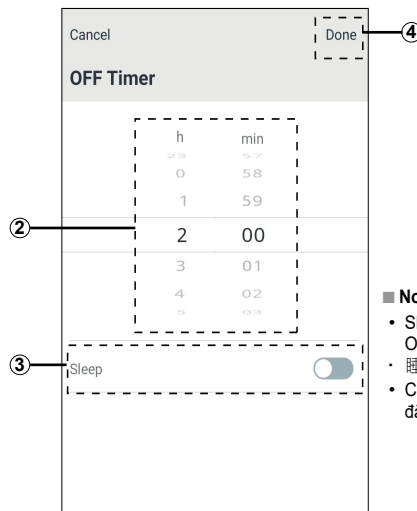
- ① 按計時器功能按鈕“🕒”。
- ② 設置關閉風扇的時和分。
- ③ 啟用睡眠模式功能。(可選) (睡眠模式說明在第 20 頁)
- ④ 按“Done”。

Để cài đặt bộ hẹn giờ TẮT

■ Lưu ý:

- Chỉ có thể kích hoạt Bộ Hẹn Giờ TẮT khi quạt trần BẬT.

- ① Ấn nút chức năng bộ hẹn giờ “🕒”.
- ② Cài đặt giờ và phút theo yêu cầu để quạt TẮT.
- ③ Kích hoạt chức năng CHẾ ĐỘ NGỦ. (Tùy chọn) (Giải thích chế độ ngủ ở trang 20)
- ④ Ấn nút “Done”.



■ Note / 備注 / Lưu ý:

- Sleep Mode can only be enabled in OFF Timer setting.
- 睡眠模式只能在計時器關設置中啟用。
- Chỉ có thể kích hoạt Chế Độ Ngủ ở cài đặt Bộ Hẹn Giờ TẮT.

SLEEP MODE function

- When the SLEEP MODE is enabled, the fan speed and timer will gradually reduce until the fan is turned off.
- The operation pattern of SLEEP MODE: **Fan reduces two speeds after every two hours (minimum speed 1), until the Ceiling Fan is turned OFF.**
- **Note:**
- SLEEP MODE can only use with OFF TIMER enabled.
- To enable SLEEP MODE fan must be at least speed 2, and OFF timer must be at least 2 hours.
- SLEEP MODE function is deactivated, if TIMER SETTING is changed.

睡眠模式功能

- 啟用睡眠模式後，風扇速度和計時器將逐漸降低，直到風扇關閉。
- 睡眠模式的運行模式：**風扇每隔兩個小時降低兩個速度（最低速度 1），直到吊扇關閉。**
- **備注：**
- 睡眠模式只能在啟用計時器關的情況下使用。
- 要啟用睡眠模式，風扇速度必須至少為 2，並且計時器關必須至少為 2 小時。
- 如果更改了計時器設置，則睡眠模式功能被禁用。

Chức năng CHẾ ĐỘ NGỦ

- Khi CHẾ ĐỘ NGỦ được kích hoạt, tốc độ và bộ hẹn giờ quạt sẽ giảm dần đến khi quạt tắt.
- Kiểu vận hành của CHẾ ĐỘ NGỦ: **Quạt giảm hai tốc độ sau 2 giờ (tốc độ nhỏ nhất là 1), cho đến khi Quạt Trán TẮT.**
- **Lưu ý:**
- CHẾ ĐỘ NGỦ chỉ có thể sử dụng khi BỘ HẸN GIỜ TẮT được kích hoạt.
- Để kích hoạt CHẾ ĐỘ NGỦ, quạt ít nhất phải ở tốc độ 2, và bộ hẹn giờ TẮT phải để ít nhất 2 giờ.
- Chức năng CHẾ ĐỘ NGỦ được vô hiệu hóa, nếu CÀI ĐẶT BỘ HẸN GIỜ bị thay đổi.

Example / 舉例 / Ví dụ:

Timer / 計時器 / Đồng hồ hẹn giờ	24h	23h	22h	21h	20h	19h	18h	17h	16h	15h	14h	13h	12h	11h	10h	9h	8h	7h	6h	5h	4h	3h	2h	1h	0h	
Speed 10 / 速度 10 / Tốc độ 10	10	→	8	→	6	→	4	→	2	→	1	→	→	→	→	→	→	→	→	→	→	→	→	→	→	
		10	→	8	→	6	→	4	→	2	→	1	→	→	→	→	→	→	→	→	→	→	→	→	→	
			10	→	8	→	6	→	4	→	2	→	1	→	→	→	→	→	→	→	→	→	→	→	→	→
				10	→	8	→	6	→	4	→	2	→	1	→	→	→	→	→	→	→	→	→	→	→	→
					10	→	8	→	6	→	4	→	2	→	1	→	→	→	→	→	→	→	→	→	→	→
						10	→	8	→	6	→	4	→	2	→	1	→	→	→	→	→	→	→	→	→	→
							10	→	8	→	6	→	4	→	2	→	1	→	→	→	→	→	→	→	→	→
								10	→	8	→	6	→	4	→	2	→	1	→	→	→	→	→	→	→	→
									10	→	8	→	6	→	4	→	2	→	1	→	→	→	→	→	→	→
										10	→	8	→	6	→	4	→	2	→	1	→	→	→	→	→	→
											10	→	8	→	6	→	4	→	2	→	1	→	→	→	→	→
												10	→	8	→	6	→	4	→	2	→	1	→	→	→	→
													10	→	8	→	6	→	4	→	2	→	1	→	→	→
														10	→	8	→	6	→	4	→	2	→	1	→	→
															10	→	8	→	6	→	4	→	2	→	1	→
																10	→	8	→	6	→	4	→	2	→	1
																	10	→	8	→	6	→	4	→	2	→
																		10	→	8	→	6	→	4	→	2
																			10	→	8	→	6	→	4	→
																				10	→	8	→	6	→	4
																					10	→	8	→	6	→
																						10	→	8	→	6
																							10	→	8	→
																								10	→	8
																								10	→	

The above SLEEP MODE pattern is based on fan set at Speed 10 and OFF timer set to various hours (from 24 hours to 2 hours).



上面的睡眠模式模型是基於風扇設置為速度 10 且計時器關閉設置為各個小時（從 24 小時到 2 小時）的基礎之上。

Kiểu CHẾ ĐỘ NGỦ trên đây dựa vào quạt được cài đặt ở Tốc độ 10 và bộ hẹn giờ TẮT được cài đặt ở nhiều giờ khác nhau (từ 24 giờ đến 2 giờ).

Add Schedule Setting

■ Note:



• Ceiling fan can have up to 42 schedules only.

- ① Press the schedule button “”.
- ② Press “Add new schedule”.
(If already has schedule, press “+” at the top right of the screen)
- ③ Select the day and time to operate the schedule.
- ④ Choose to set the schedule with fan only or light* only or both*.
- ⑤ Press “” button of operation to enable or disable the function setting. Set according to preference.

添加計畫設置

■ 備注:



• 吊扇最多只能有 42 個計畫。

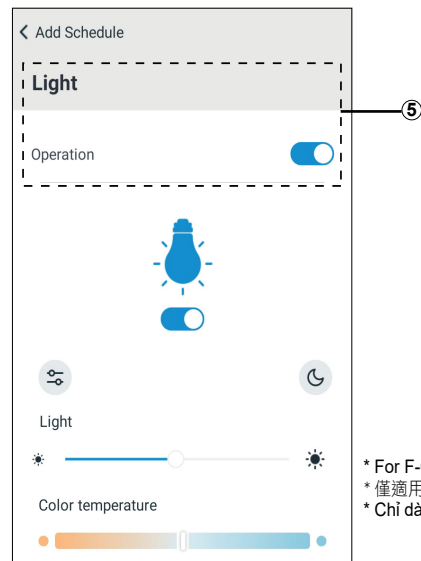
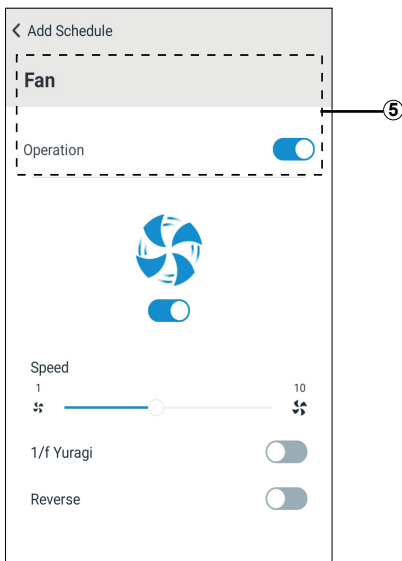
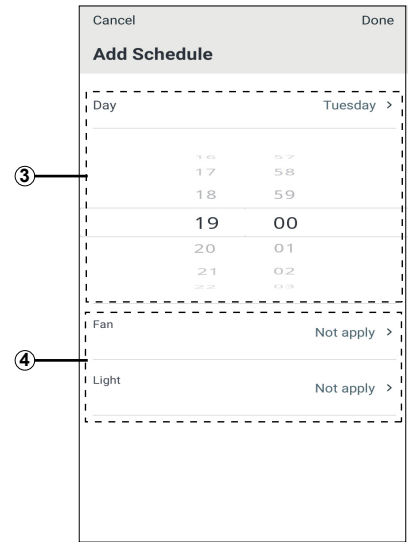
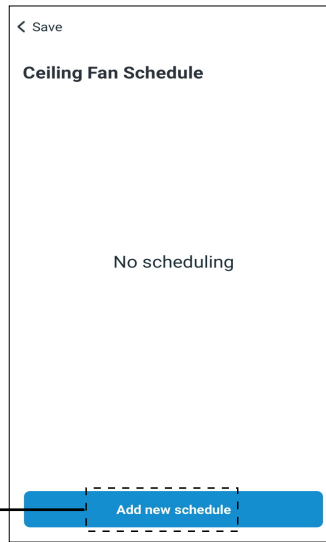
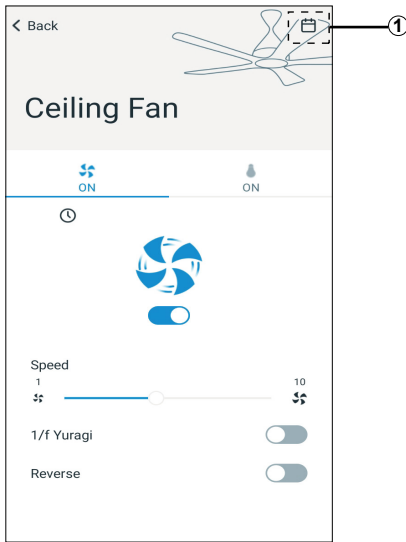
- ① 按計畫鍵 “”。
- ② 按 “Add new schedule”。
(如果已有計畫，請按螢幕右上方的 “+”)
- ③ 選擇運行計畫的日期和時間。
- ④ 僅對風扇或僅對燈* 來設置計畫，或對二者同時設置計畫。
- ⑤ 按運行的 “” 按鈕啟用或禁用功能設置。依照偏好設置。

Bổ Sung Cài Đặt Lịch

■ Lưu ý:

• Quạt trần chỉ có thể có đến 42 lịch.

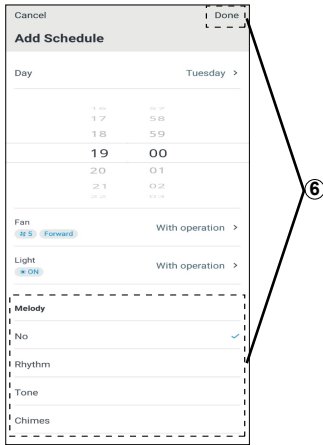
- ① Ấn nút lịch “”.
- ② Ấn nút “Add new schedule”.
(Nếu đã có lịch, ấn “+” ở góc trên cùng bên phải màn hình)
- ③ Chọn ngày và giờ để vận hành lịch.
- ④ Chọn cài đặt lịch bằng quạt hoặc đèn* hay cả hai*.
- ⑤ Ấn nút “” vận hành để kích hoạt hoặc vô hiệu hóa cài đặt chức năng. Cài đặt theo ưu tiên.



* For F-60DGN & F-48DGL only /
* 僅適用於 F-60DGN & F-48DGL /
* Chỉ dành cho F-60DGN & F-48DGL

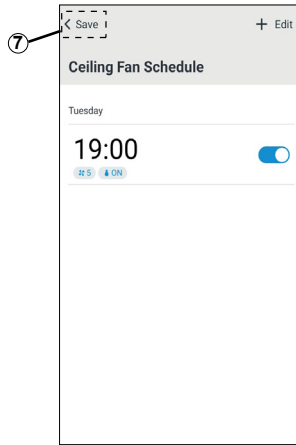
Add Schedule Setting (continue from page 21)

- ⑥ Select melody.
(Melody selection only shows up after set "Fan - with operation" or "Light - with operation")
Then, press "Done".
- ⑦ Press "Save" to confirm.
- ⑧ Press "Yes" to complete the settings.



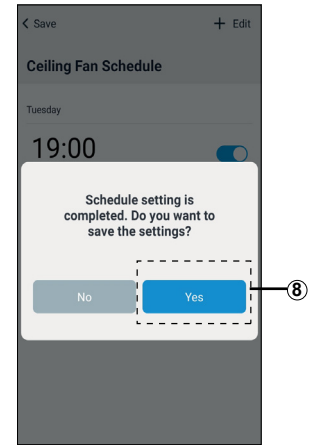
添加計畫設置 (續第 21 頁)

- ⑥ 選擇旋律。
(選擇旋律僅在設置了“風扇-運行”或“燈光-運行”後顯示。) 然後按“Done”。
- ⑦ 按“Save”確認。
- ⑧ 按“Yes”完成設置。



Bổ Sung Cài Đặt Lịch (tiếp tục từ trang 21)

- ⑥ Chọn giai điệu.
(Lựa chọn giai điệu chỉ xuất hiện sau khi cài đặt "Quạt - có vận hành" hoặc "Đèn - có vận hành")
Sau đó, ấn nút "Done".
- ⑦ Ấn nút "Save" để xác nhận.
- ⑧ Ấn nút "Yes" để hoàn tất cài đặt.



Edit Schedule Setting

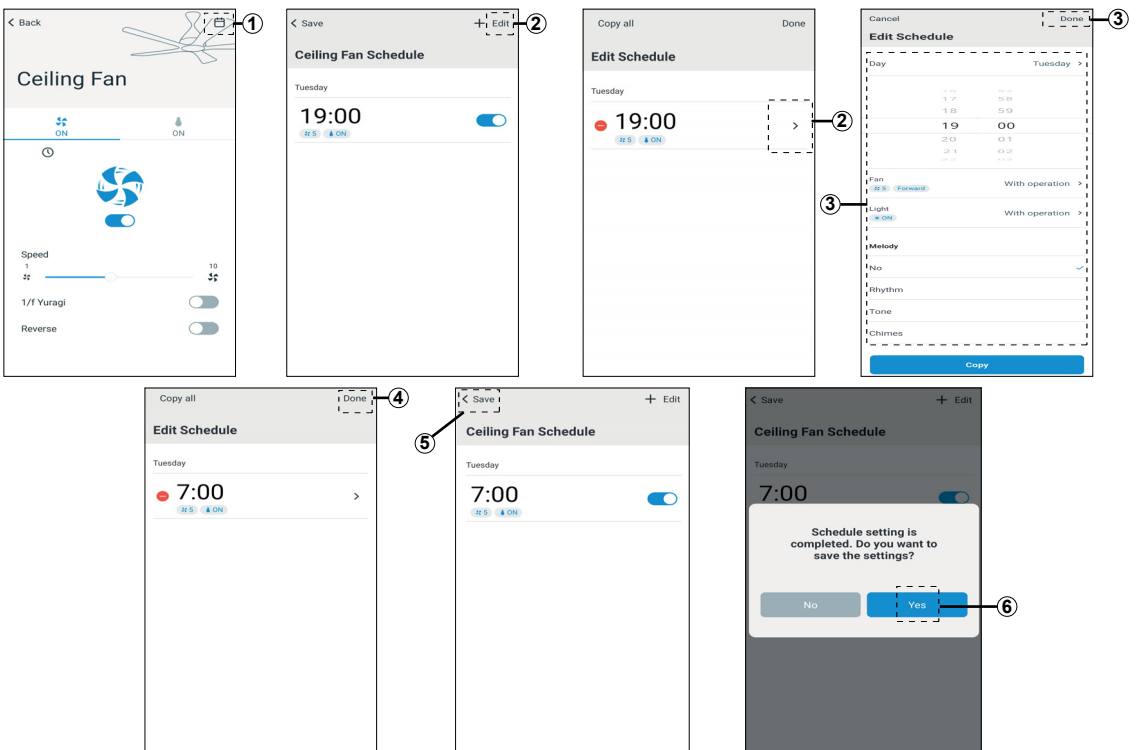
- ① Press the schedule button “”.
- ② Press "Edit". Select which schedule to edit.
- ③ Set according to preference and press "Done".
- ④ Press "Done" button.
- ⑤ Press "Save".
- ⑥ Press "Yes".

編輯計畫設置


- ① 按計畫鍵 “”。
- ② 按“Edit”。選擇要編輯的計畫。
- ③ 根據個人偏好進行設置，然後按“Done”。
- ④ 按“Done”按鈕。
- ⑤ 按“Save”。
- ⑥ 按“Yes”。

Biên Tập Cài Đặt Lịch


- ① Ấn nút lịch “”.
- ② Ấn nút "Edit". Chọn lịch cần biên tập.
- ③ Cài đặt theo ưu tiên và ấn nút "Done".
- ④ Ấn nút "Done".
- ⑤ Ấn nút "Save".
- ⑥ Ấn nút "Yes".




Copy schedule (to other day)

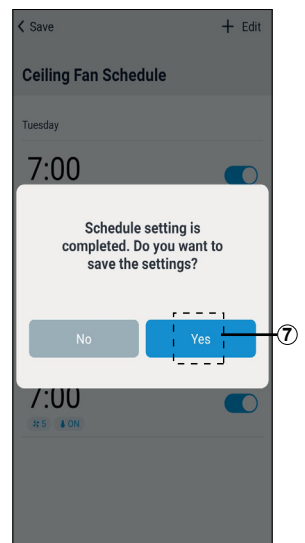
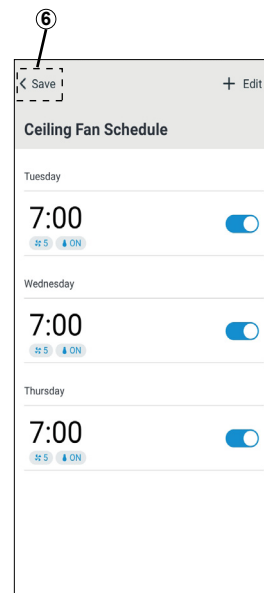
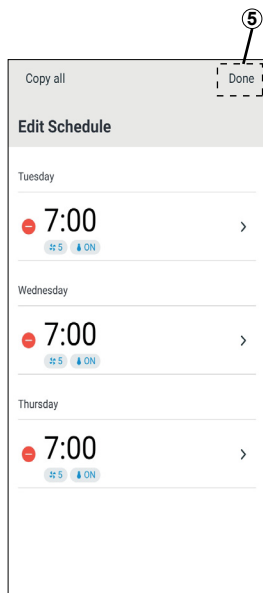
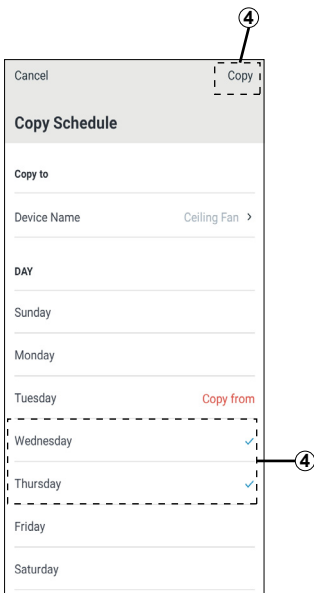
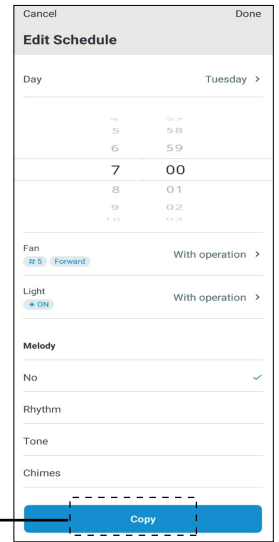
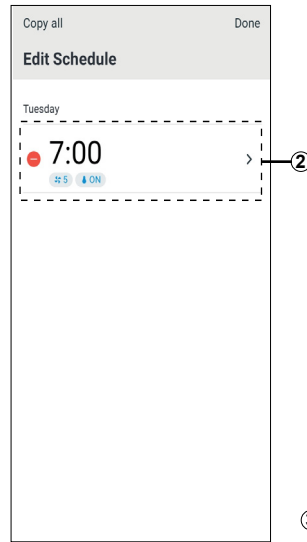
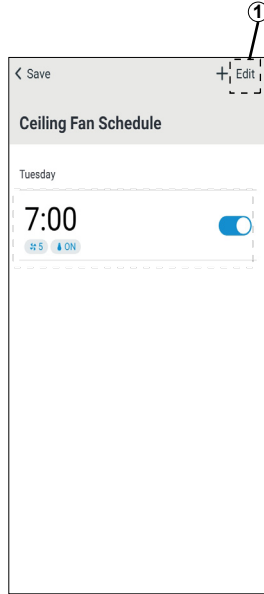
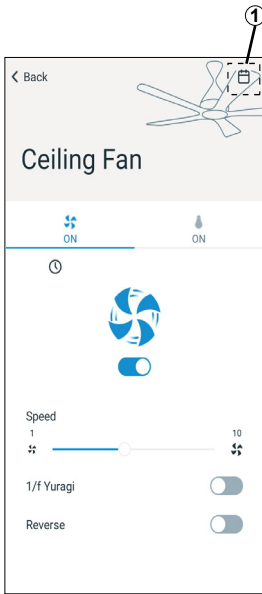
- 1 Select schedule button “” and press “Edit”.
- 2 Choose the desired schedule to copy.
- 3 Press “Copy” at the bottom of the screen.
- 4 Choose the day you want to paste the copied setting, then press “Copy” at the top right of the screen.
- 5 Press “Done”.
- 6 Press “Save”.
- 7 Press “Yes”.

複製計畫 (到其他日期)


- 1 選擇計畫按鈕 “”，然後按 “Edit”。
- 2 選擇要複製的計畫。
- 3 按螢幕底部的 “Copy”。
- 4 選擇要粘貼到的日期，然後按螢幕右上方的 “Copy”。
- 5 按 “Done”。
- 6 按 “Save”。
- 7 按 “Yes”。

Sao chép lịch (sang ngày khác)

- 1 Chọn nút lịch “” và ấn nút “Edit”.
- 2 Chọn lịch cần sao chép.
- 3 Ấn nút “Copy” phía dưới màn hình.
- 4 Chọn ngày bạn muốn dán cài đặt được sao chép, sau đó ấn “Copy” góc trên cùng bên phải màn hình.
- 5 Ấn nút “Done”.
- 6 Ấn nút “Save”.
- 7 Ấn nút “Yes”.




Copy schedule (to other fan)

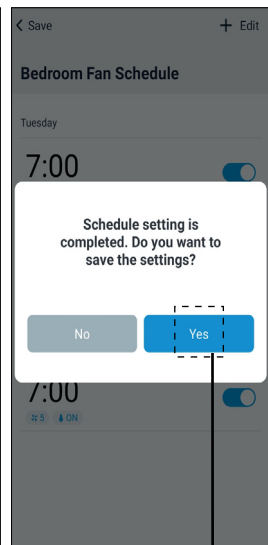
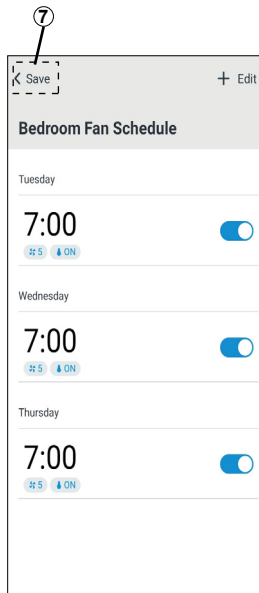
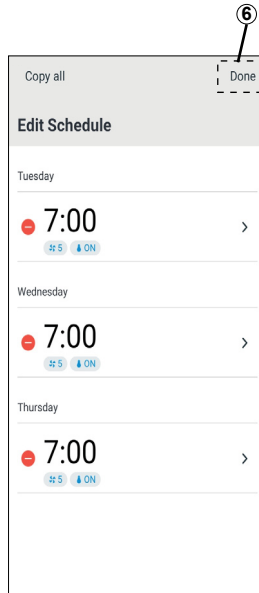
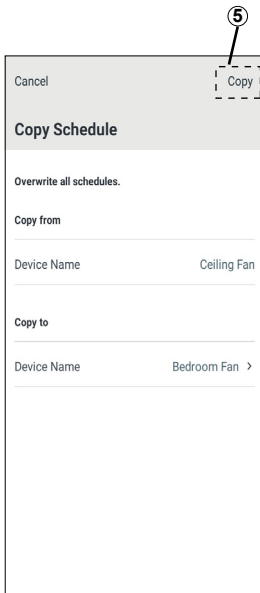
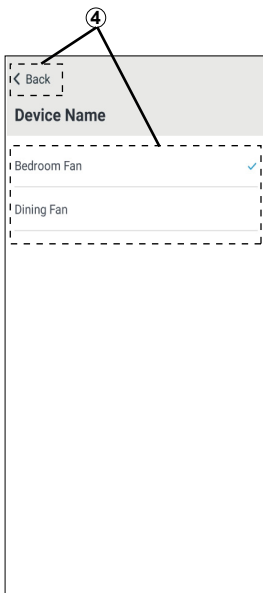
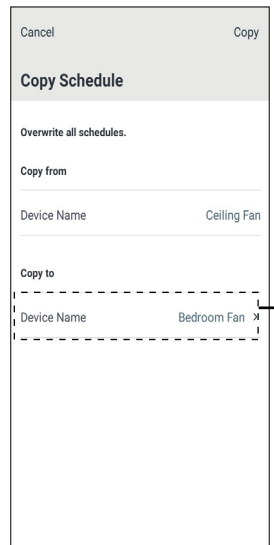
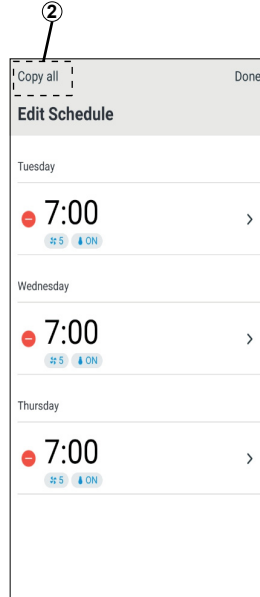
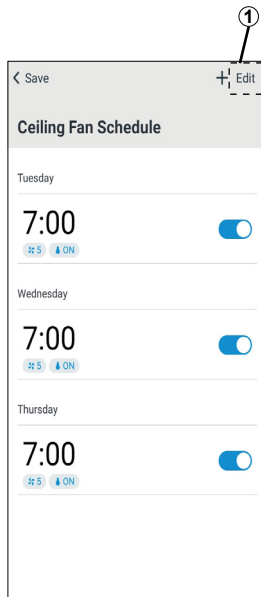
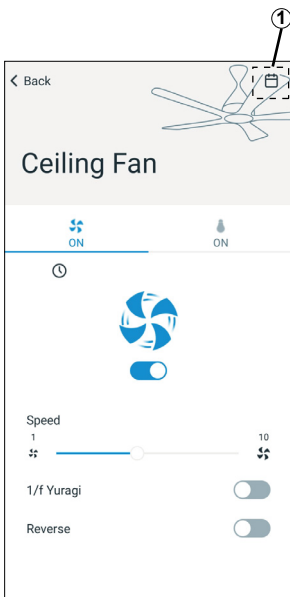
- ① Select schedule button “” and press “Edit”.
- ② Press “Copy all”.
- ③ Choose the product that you want to copy.
- ④ Choose the product that you want to paste the copied setting, then press “Back”.
- ⑤ Press “Copy”.
- ⑥ Press “Done”.
- ⑦ Confirm copy destination fan name and press “Save”.
- ⑧ Press “Yes”.

複製計畫 (到其它風扇)


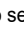
- ① 選擇計畫按鈕 “”，然後按 “Edit”。
- ② 按 “Copy all”。
- ③ 選擇要複製的計畫。
- ④ 選擇要粘貼到的產品，然後按 “Back”。
- ⑤ 按 “Copy”。
- ⑥ 按 “Done”。
- ⑦ 確認要複製到的目標風扇名稱，然後按 “Save”。
- ⑧ 按 “Yes”。

Sao chép lịch (sang quạt khác)

- ① Chọn nút lịch “” và ấn nút “Edit”.
- ② Ấn nút “Copy all”.
- ③ Chọn sản phẩm bạn muốn sao chép.
- ④ Chọn sản phẩm bạn muốn dán cài đặt được sao chép, sau đó ấn nút “Back”.
- ⑤ Ấn nút “Copy”.
- ⑥ Ấn nút “Done”.
- ⑦ Xác nhận tên quạt đích sao chép và ấn nút “Save”.
- ⑧ Ấn nút “Yes”.




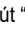
Delete Schedule Setting

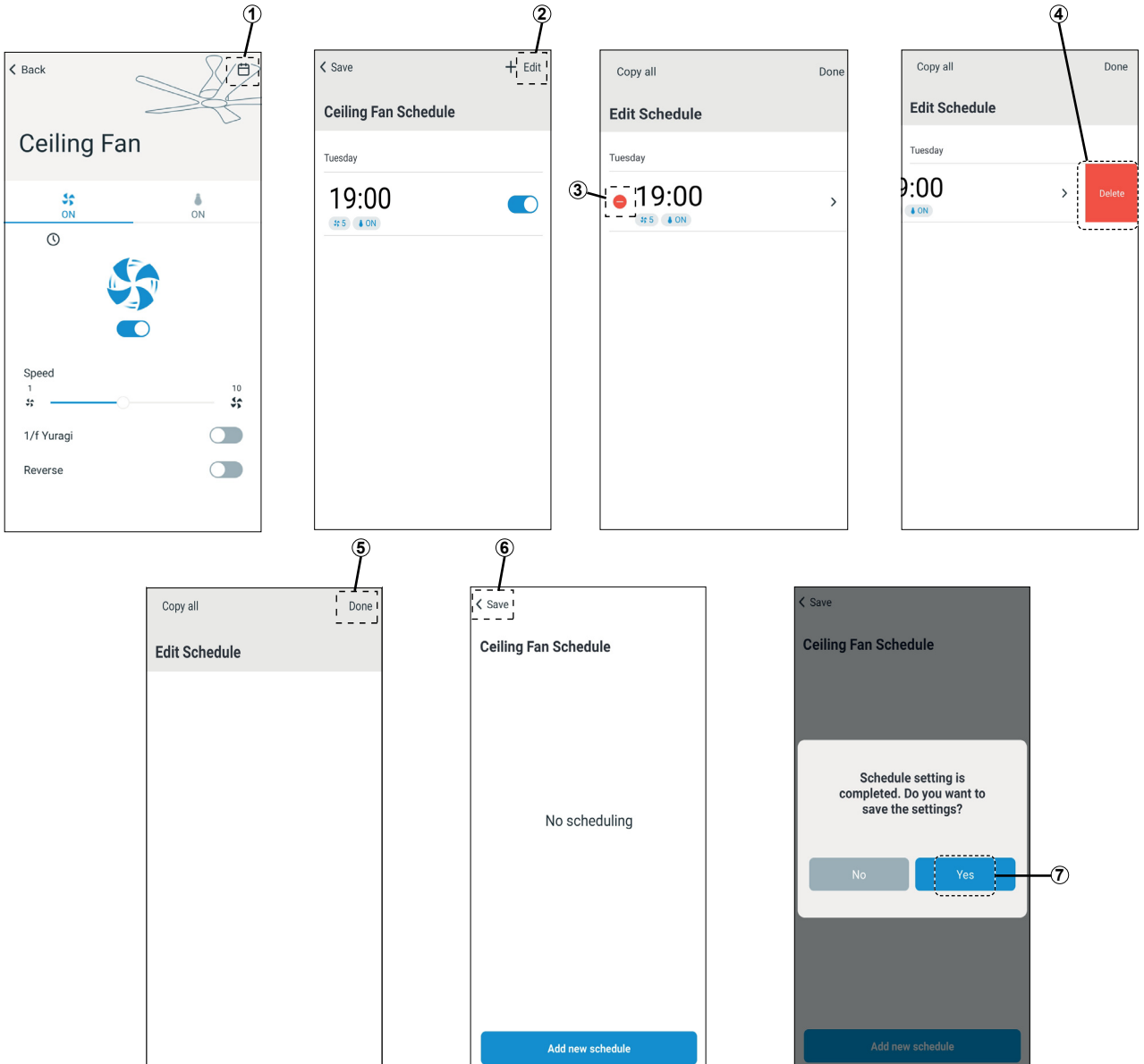
- ① Press the schedule button “”.
- ② Press “Edit”.
- ③ Press “” button to select which schedule to delete.
- ④ Press “Delete” button.
- ⑤ Press “Done”.
- ⑥ Press “Save”.
- ⑦ Press “Yes”.

刪除計畫設置

- ① 按計畫鍵 “”。
- ② 按 “Edit”。
- ③ 按 “” 按鈕選擇要刪除的計畫。
- ④ 按 “Delete” 按鈕。
- ⑤ 按 “Done”。
- ⑥ 按 “Save”。
- ⑦ 按 “Yes”。

Xóa Cài Đặt Lịch

- ① Ấn nút lịch “”.
- ② Ấn nút “Edit”.
- ③ Ấn nút “” để chọn lịch cần xóa.
- ④ Ấn nút “Delete”.
- ⑤ Ấn nút “Done”.
- ⑥ Ấn nút “Save”.
- ⑦ Ấn nút “Yes”.



■ Note / 備注 / Lưu ý:

- Schedule settings are stored in the server.
- If uninstall the App from smart devices, the settings will remain in the server.
- To cancel the schedule settings properly, can only do from the App itself before uninstall.
- 計畫設置保存在伺服器上。
- 即使您從智慧設備刪除了該應用程式，其設置仍將保留在伺服器上。
- 在卸載應用程式前刪除計畫設置，方可正確地將計畫設置刪除。
- Các cài đặt lịch được lưu trong máy chủ.
- Nếu gỡ Ứng Dụng ra khỏi các thiết bị thông minh, các cài đặt vẫn ở trong máy chủ.
- Để hủy các cài đặt lịch đúng cách, chỉ có thể làm từ chính Ứng Dụng trước khi gỡ cài đặt.

How to cancel registration of ceiling fan

如何取消吊扇註冊

Cách hủy đăng ký quạt trần

■ Note:

• After done below steps, the ceiling fan will be deleted from all App accounts that have been registered and the schedule settings will be cleared.

- ① If the fan is rotating, turn off using remote control.
- ② Long press "Wi-Fi" button on remote control for 5 seconds. Ceiling fan will have continuous beeping sound.
- ③ Long press "Reverse" button on remote control for 5 seconds. Ceiling fan will stop beeping.
- ④ Screen will appear Offline.

■ 備注:

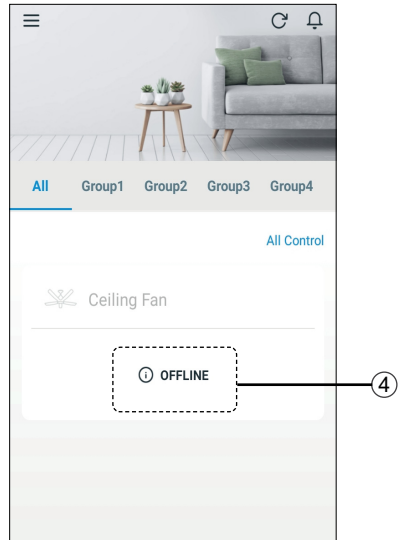
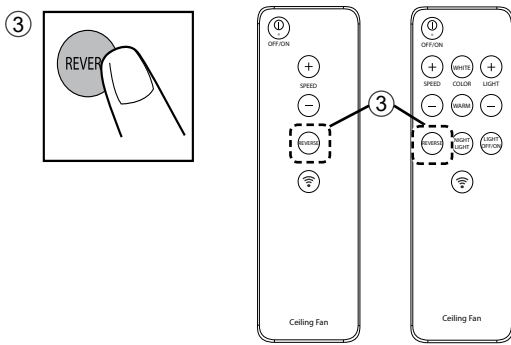
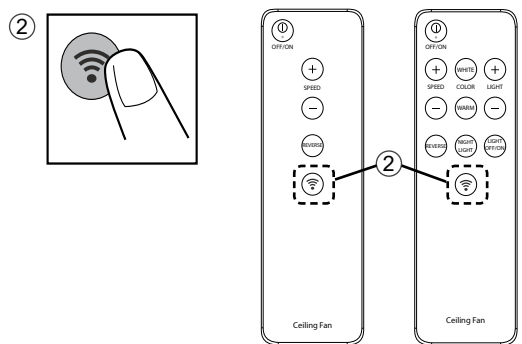
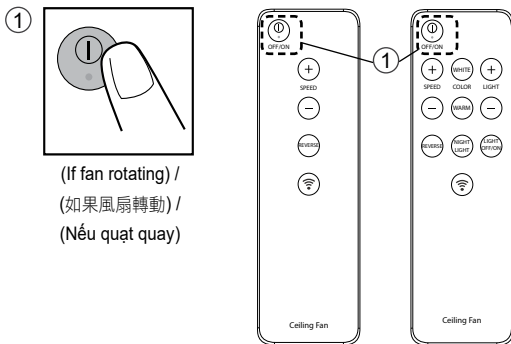
• 完成以下步驟後，吊扇將從所有已註冊的應用程式帳戶中刪除，並且計畫將被清空。

- ① 如果風扇旋轉，請使用遙控器關閉風扇。
- ② 長按遙控器上的“Wi-Fi”鍵 5 秒鐘。吊扇會發出連續的蜂鳴聲。
- ③ 長按遙控器上的“Reverse”按鈕 5 秒鐘。吊扇停止蜂鳴。
- ④ 螢幕將顯示為離線。

■ Lưu ý:

• Sau khi thực hiện các bước dưới đây, quạt trần sẽ được xóa khỏi tất cả các tài khoản Ứng Dụng đã được đăng ký và các cài đặt lịch sẽ được xóa.

- ① Nếu quạt đang quay, hãy tắt bằng điều khiển từ xa.
- ② Ấn và giữ nút "Wi-Fi" trên điều khiển từ xa trong 5 giây. Quạt trần sẽ phát ra tiếng bíp liên tục.
- ③ Ấn và giữ nút "Reverse" trên điều khiển từ xa trong 5 giây. Quạt trần sẽ dừng phát ra tiếng bíp.
- ④ Màn hình sẽ xuất hiện Ngoại Tuyến.



Copyright ①

- Android and Google Play are trademarks or registered trademarks of Google LLC.
- iPhone is a trademark of Apple Inc. registered in the United States and other countries. The iPhone trademarks is used under license of iPhone Co., Ltd.
- The App Store is a service mark of Apple Inc.
- "Wi-Fi®" is a registered trademark of "Wi-Fi Alliance®".
- "Wi-Fi Protected Setup™", "WPA™" and "WPA2™" are trademarks of "Wi-Fi Alliance®".
- "Wi-Fi CERTIFIED™" logo is an approval mark of "Wi-Fi Alliance®".
- "Wi-Fi Protected Setup™" logo is an approval mark of "Wi-Fi Alliance®".
- Other names, company names, product names, etc described in this manual are trademarks or registered trademarks of each company. In the text, some™ and ® marks are not listed.



About Software

• This product incorporates the following software:

- 1) The software developed independently by or for Panasonic Corporation,
- 2) The software owned by third party and licensed to Panasonic Corporation,
- 3) The software licensed under the GNU GENERAL PUBLIC LICENSE Version 2.0 (GPL V2.0),
- 4) Open sourced software other than the software licensed under the GPL V2.0.

The software categorized as (3) and (4) are distributed in the hope that it will be useful, but without any warranty, without even the implied warranty of [merchantability] or [fitness for a particular purpose]. Please refer to the detailed terms and conditions thereof shown in the "Software License" menu on this product.

At least three (3) years from delivery of this product, we will give to any third party who contacts us at the contact information provided below, for a charge no more than our cost of physically performing source code distribution, a complete machine-readable copy of the corresponding source code covered under GPL V2.0 or the other licenses with the obligation to do so, as well as the respective copyright notice thereof.

Contact information:

Panasonic Malaysia Customer Care Centre.

lwIP

lwIP is licenced under the BSD licence:

Copyright (c) 2001-2004 Swedish Institute of Computer Science.

All rights reserved.

Copyright (c) 2001-2003 Swedish Institute of Computer Science. All rights reserved.

Copyright (c) 2002 CITEC Technologies Ltd. All rights reserved.

Copyright (c) 2007 Dominik Spies <kontakt@dspies.de> All rights reserved.

Copyright (c) 2002-2003, Adam Dunkels. All rights reserved.

Copyright (c) 2001-2003 Swedish Institute of Computer Science.

Copyright (c) 2003-2004 Leon Woestenberg <leon.woestenberg@axon.tv>

Copyright (c) 2003-2004 Axon Digital Design B.V., The Netherlands.

All rights reserved.

Copyright (c) 2001-2004 Leon Woestenberg <leon.woestenberg@gmx.net>

Copyright (c) 2001-2004 Axon Digital Design B.V., The Netherlands.

All rights reserved.

MINIX3

Copyright (c) 2016 The MINIX 3 Project.

All rights reserved.

Redistribution and use in source and binary forms, with or without modification, are permitted provided that the following conditions are met:

1. Redistributions of source code must retain the above copyright notice, this list of conditions and the following disclaimer.
2. Redistributions in binary form must reproduce the above copyright notice, this list of conditions and the following disclaimer in the documentation and/or other materials provided with the distribution.
3. The name of the author may not be used to endorse or promote products derived from this software without specific prior written permission.

THIS SOFTWARE IS PROVIDED BY THE AUTHOR "AS IS" AND ANY EXPRESS OR IMPLIED WARRANTIES, INCLUDING, BUT NOT LIMITED TO, THE IMPLIED WARRANTIES OF MERCHANTABILITY AND FITNESS FOR A PARTICULAR PURPOSE ARE DISCLAIMED. IN NO EVENT SHALL THE AUTHOR BE LIABLE FOR ANY DIRECT, INDIRECT, INCIDENTAL, SPECIAL, EXEMPLARY, OR CONSEQUENTIAL DAMAGES (INCLUDING, BUT NOT LIMITED TO, PROCUREMENT OF SUBSTITUTE GOODS OR SERVICES; LOSS OF USE, DATA, OR PROFITS; OR BUSINESS INTERRUPTION) HOWEVER CAUSED AND ON ANY THEORY OF LIABILITY, WHETHER IN CONTRACT, STRICT LIABILITY, OR TORT (INCLUDING NEGLIGENCE OR OTHERWISE) ARISING IN ANY WAY OUT OF THE USE OF THIS SOFTWARE, EVEN IF ADVISED OF THE POSSIBILITY OF SUCH DAMAGE.

Copyright (C) 2006-2015, ARM Limited, All Rights Reserved

Copyright (C) 2006-2016, ARM Limited, All Rights Reserved

Apache License

Version 2.0, January 2004

<http://www.apache.org/licenses/>

TERMS AND CONDITIONS FOR USE, REPRODUCTION, AND DISTRIBUTION

1. Definitions.

"License" shall mean the terms and conditions for use, reproduction, and distribution as defined by Sections 1 through 9 of this document.

"Licensor" shall mean the copyright owner or entity authorized by the copyright owner that is granting the License.

"Legal Entity" shall mean the union of the acting entity and all other entities that control, are controlled by, or are under common control with that entity. For the purposes of this definition, "control" means (i) the power, direct or indirect, to cause the direction or management of such entity, whether by contract or otherwise, or (ii) ownership of fifty percent (50%) or more of the outstanding shares, or (iii) beneficial ownership of such entity.

"You" (or "Your") shall mean an individual or Legal Entity exercising permissions granted by this License.

"Source" form shall mean the preferred form for making modifications, including but not limited to software source code, documentation source, and configuration files.

"Object" form shall mean any form resulting from mechanical transformation or translation of a Source form, including but not limited to compiled object code, generated documentation, and conversions to other media types.

"Work" shall mean the work of authorship, whether in Source or Object form, made available under the License, as indicated by a copyright notice that is included in or attached to the work (an example is provided in the Appendix below).

"Derivative Works" shall mean any work, whether in Source or Object form, that is based on (or derived from) the Work and for which the editorial revisions, annotations, elaborations, or other modifications represent, as a whole, an original work of authorship. For the purposes of this License, Derivative Works shall not include works that remain separable from, or merely link (or bind by name) to the interfaces of, the Work and Derivative Works thereof.

"Contribution" shall mean any work of authorship, including the original version of the Work and any modifications or additions to that Work or Derivative Works thereof, that is intentionally submitted to Licensor for inclusion in the Work by the copyright owner or by an individual or Legal Entity authorized to submit on behalf of the copyright owner. For the purposes of this definition, "submitted" means any form of electronic, verbal, or written communication sent to the Licensor or its representatives, including but not limited to communication on electronic mailing lists, source code control systems, and issue tracking systems that are managed by, or on behalf of, the Licensor for the purpose of discussing and improving the Work, but excluding communication that is conspicuously marked or otherwise designated in writing by the copyright owner as "Not a Contribution."

"Contributor" shall mean Licensor and any individual or Legal Entity on behalf of whom a Contribution has been received by Licensor and subsequently incorporated within the Work.

2. Grant of Copyright License. Subject to the terms and conditions of this License, each Contributor hereby grants to You a perpetual, worldwide, non-exclusive, no-charge, royalty-free, irrevocable copyright license to reproduce, prepare Derivative Works of, publicly display, publicly perform, sublicense, and distribute the Work and such Derivative Works in Source or Object form.

3. Grant of Patent License. Subject to the terms and conditions of this License, each Contributor hereby grants to You a perpetual, worldwide, non-exclusive, no-charge, royalty-free, irrevocable (except as stated in this section) patent license to make, have made, use, offer to sell, sell, import, and otherwise transfer the Work, where such license applies only to those patent claims licensable by such Contributor that are necessarily infringed by their Contribution(s) alone or by combination of their Contribution(s) with the Work to which such Contribution(s) was submitted. If You institute patent litigation against any entity (including a cross-claim or counterclaim in a lawsuit) alleging that the Work or a Contribution incorporated within the Work constitutes direct or contributory patent infringement, then any patent licenses granted to You under this License for that Work shall terminate as of the date such litigation is filed.

4. Redistribution. You may reproduce and distribute copies of the Work or Derivative Works thereof in any medium, with or without modifications, and in Source or Object form, provided that You meet the following conditions:

- (a) You must give any other recipients of the Work or Derivative Works a copy of this License; and
- (b) You must cause any modified files to carry prominent notices stating that You changed the files; and
- (c) You must retain, in the Source form of any Derivative Works that You distribute, all copyright, patent, trademark, and attribution notices from the Source form of the Work, excluding those notices that do not pertain to any part of the Derivative Works; and
- (d) If the Work includes a "NOTICE" text file as part of its distribution, then any Derivative Works that You distribute must include a readable copy of the attribution notices contained within such NOTICE file, excluding those notices that do not pertain to any part of the Derivative Works, in at least one of the following places: within a NOTICE text file distributed as part of the Derivative Works; within the Source form or documentation, if provided along with the Derivative Works; or, within a display generated by the Derivative Works, if and wherever such third-party notices normally appear. The contents of the NOTICE file are for informational purposes only and do not modify the License. You may add Your own attribution notices within Derivative Works that You distribute, alongside or as an addendum to the NOTICE text from the Work, provided that such additional attribution notices cannot be construed as modifying the License.

Copyright ②

You may add Your own copyright statement to Your modifications and may provide additional or different license terms and conditions for use, reproduction, or distribution of Your modifications, or for any such Derivative Works as a whole, provided Your use, reproduction, and distribution of the Work otherwise complies with the conditions stated in this License.

5. Submission of Contributions. Unless You explicitly state otherwise, any Contribution intentionally submitted for inclusion in the Work by You to the Licensor shall be under the terms and conditions of this License, without any additional terms or conditions. Notwithstanding the above, nothing herein shall supersede or modify the terms of any separate license agreement you may have executed with Licensor regarding such Contributions.

6. Trademarks. This License does not grant permission to use the trade names, trademarks, service marks, or product names of the Licensor, except as required for reasonable and customary use in describing the origin of the Work and reproducing the content of the NOTICE file.

7. Disclaimer of Warranty. Unless required by applicable law or agreed to in writing, Licensor provides the Work (and each Contributor provides its Contributions) on an "AS IS" BASIS, WITHOUT WARRANTIES OR CONDITIONS OF ANY KIND, either express or implied, including, without limitation, any warranties or conditions of TITLE, NON-INFRINGEMENT, MERCHANTABILITY, or FITNESS FOR A PARTICULAR PURPOSE. You are solely responsible for determining the appropriateness of using or redistributing the Work and assume any risks associated with Your exercise of permissions under this License.

8. Limitation of Liability. In no event and under no legal theory, whether in tort (including negligence), contract, or otherwise, unless required by applicable law (such as deliberate and grossly negligent acts) or agreed to in writing, shall any Contributor be liable to You for damages, including any direct, indirect, special, incidental, or consequential damages of any character arising as a result of this License or out of the use or inability to use the Work (including but not limited to damages for loss of goodwill, work stoppage, computer failure or malfunction, or any and all other commercial damages or losses), even if such Contributor has been advised of the possibility of such damages.

9. Accepting Warranty or Additional Liability. While redistributing the Work or Derivative Works thereof, You may choose to offer, and charge a fee for, acceptance of support, warranty, indemnity, or other liability obligations and/or rights consistent with this License. However, in accepting such obligations, You may act only on Your own behalf and on Your sole responsibility, not on behalf of any other Contributor, and only if You agree to indemnify, defend, and hold each Contributor harmless for any liability incurred by, or claims asserted against, such Contributor by reason of your accepting any such warranty or additional liability.

END OF TERMS AND CONDITIONS

APPENDIX: How to apply the Apache License to your work.

To apply the Apache License to your work, attach the following boilerplate notice, with the fields enclosed by brackets "[]" replaced with your own identifying information. (Don't include the brackets!) The text should be enclosed in the appropriate comment syntax for the file format. We also recommend that a file or class name and description of purpose be included on the same "printed page" as the copyright notice for easier identification within third-party archives.

Copyright [yyyy] [name of copyright owner]

Licensed under the Apache License, Version 2.0 (the "License");
you may not use this file except in compliance with the License.
You may obtain a copy of the License at

<http://www.apache.org/licenses/LICENSE-2.0>

Unless required by applicable law or agreed to in writing, software distributed under the License is distributed on an "AS IS" BASIS, WITHOUT WARRANTIES OR CONDITIONS OF ANY KIND, either express or implied.
See the License for the specific language governing permissions and limitations under the License.

WPA Supplicant

Copyright (c) 2003-2016, Jouni Malinen <j@w1.fi> and contributors All Rights Reserved.
This program is licensed under the BSD license (the one with advertisement clause removed).

If you are submitting changes to the project, please see CONTRIBUTIONS file for more instructions.

License

This software may be distributed, used, and modified under the terms of BSD license: Redistribution and use in source and binary forms, with or without modification, are permitted provided that the following conditions are met:

1. Redistributions of source code must retain the above copyright notice, this list of conditions and the following disclaimer.
2. Redistributions in binary form must reproduce the above copyright notice, this list of conditions and the following disclaimer in the documentation and/or other materials provided with the distribution.

3. Neither the name(s) of the above-listed copyright holder(s) nor the names of its contributors may be used to endorse or promote products derived from this software without specific prior written permission.

THIS SOFTWARE IS PROVIDED BY THE COPYRIGHT HOLDERS AND CONTRIBUTORS "AS IS" AND ANY EXPRESS OR IMPLIED WARRANTIES, INCLUDING, BUT NOT LIMITED TO, THE IMPLIED WARRANTIES OF MERCHANTABILITY AND FITNESS FOR A PARTICULAR PURPOSE ARE DISCLAIMED. IN NO EVENT SHALL THE COPYRIGHT OWNER OR CONTRIBUTORS BE LIABLE FOR ANY DIRECT, INDIRECT, INCIDENTAL, SPECIAL, EXEMPLARY, OR CONSEQUENTIAL DAMAGES (INCLUDING, BUT NOT LIMITED TO, PROCUREMENT OF SUBSTITUTE GOODS OR SERVICES; LOSS OF USE, DATA, OR PROFITS; OR BUSINESS INTERRUPTION) HOWEVER CAUSED AND ON ANY THEORY OF LIABILITY, WHETHER IN CONTRACT, STRICT LIABILITY, OR TORT (INCLUDING NEGLIGENCE OR OTHERWISE) ARISING IN ANY WAY OUT OF THE USE OF THIS SOFTWARE, EVEN IF ADVISED OF THE POSSIBILITY OF SUCH DAMAGE.

Free RTOS

The FreeRTOS source code is licensed by a "modified" GNU General Public License (GPL). The modification is provided in the form of an exception.

NOTE: The modification to the GPL is included to allow you to distribute a combined work that includes FreeRTOS without being obliged to provide the source code for proprietary components outside of the FreeRTOS kernel.

The FreeRTOS GPL Exception Text:

Any FreeRTOS source code, whether modified or in its original release form, or whether in whole or in part, can only be distributed by you under the terms of the GNU General Public License plus this exception. An independent module is a module which is not derived from or based on FreeRTOS.

Clause 1:

Linking FreeRTOS statically or dynamically with other modules is making a combined work based on FreeRTOS. Thus, the terms and conditions of the GNU General Public License cover the whole combination.

As a special exception, the copyright holder of FreeRTOS gives you permission to link FreeRTOS with independent modules that communicate with FreeRTOS solely through the FreeRTOS API interface, regardless of the license terms of these independent modules, and to copy and distribute the resulting combined work under terms of your choice, provided that

- + Every copy of the combined work is accompanied by a written statement that details to the recipient the version of FreeRTOS used and an offer by yourself to provide the FreeRTOS source code (including any modifications you may have made) should the recipient request it.
- + The combined work is not itself an RTOS, scheduler, kernel or related product.
- + The independent modules add significant and primary functionality to FreeRTOS and do not merely extend the existing functionality already present in FreeRTOS.

Clause 2:

FreeRTOS may not be used for any competitive or comparative purpose, including the publication of any form of run time or compile time metric, without the express permission of Real Time Engineers Ltd. (this is the norm within the industry and is intended to ensure information accuracy).

The standard GPL exception text:

GNU GENERAL PUBLIC LICENSE
Version 2, June 1991

Copyright (C) 1989, 1991 Free Software Foundation, Inc.
59 Temple Place, Suite 330, Boston, MA 02111-1307 USA

Everyone is permitted to copy and distribute verbatim copies of this license document, but changing it is not allowed.

Preamble

The licenses for most software are designed to take away your freedom to share and change it. By contrast, the GNU General Public License is intended to guarantee your freedom to share and change free software—to make sure the software is free for all its users. This General Public License applies to most of the Free Software Foundation's software and to any other program whose authors commit to using it. (Some other Free Software Foundation software is covered by the GNU Library General Public License instead.) You can apply it to your programs, too.

When we speak of free software, we are referring to freedom, not price. Our General Public Licenses are designed to make sure that you have the freedom to distribute copies of free software (and charge for this service if you wish), that you receive source code or can get it if you want it, that you can change the software or use pieces of it in new free programs; and that you know you can do these things.

To protect your rights, we need to make restrictions that forbid anyone to deny you these rights or to ask you to surrender the rights. These restrictions translate to certain responsibilities for you if you distribute copies of the software, or if you modify it.

For example, if you distribute copies of such a program, whether gratis or for a fee, you must give the recipients all the rights that you have. You must make sure that they, too, receive or can get the source code. And you must show them these terms so they know their rights.

Copyright ③

We protect your rights with two steps: (1) copyright the software, and (2) offer you this license which gives you legal permission to copy, distribute and/or modify the software.

Also, for each author's protection and ours, we want to make certain that everyone understands that there is no warranty for this free software. If the software is modified by someone else and passed on, we want its recipients to know that what they have is not the original, so that any problems introduced by others will not reflect on the original authors' reputations.

Finally, any free program is threatened constantly by software patents. We wish to avoid the danger that redistributors of a free program will individually obtain patent licenses, in effect making the program proprietary. To prevent this, we have made it clear that any patent must be licensed for everyone's free use or not licensed at all.

The precise terms and conditions for copying, distribution and modification follow.

GNU GENERAL PUBLIC LICENSE

TERMS AND CONDITIONS FOR COPYING, DISTRIBUTION AND MODIFICATION

0. This License applies to any program or other work which contains a notice placed by the copyright holder saying it may be distributed under the terms of this General Public License. The "Program", below, refers to any such program or work, and a "work based on the Program" means either the Program or any derivative work under copyright law: that is to say, a work containing the Program or a portion of it, either verbatim or with modifications and/or translated into another language. (Hereinafter, translation is included without limitation in the term "modification".) Each licensee is addressed as "you".

Activities other than copying, distribution and modification are not covered by this License; they are outside its scope. The act of running the Program is not restricted, and the output from the Program is covered only if its contents constitute a work based on the Program (independent of having been made by running the Program). Whether that is true depends on what the Program does.

1. You may copy and distribute verbatim copies of the Program's source code as you receive it, in any medium, provided that you conspicuously and appropriately publish on each copy an appropriate copyright notice and disclaimer of warranty; keep intact all the notices that refer to this License and to the absence of any warranty; and give any other recipients of the Program a copy of this License along with the Program.

You may charge a fee for the physical act of transferring a copy, and you may at your option offer warranty protection in exchange for a fee.

2. You may modify your copy or copies of the Program or any portion of it, thus forming a work based on the Program, and copy and distribute such modifications or work under the terms of Section 1 above, provided that you also meet all of these conditions:

- You must cause the modified files to carry prominent notices stating that you changed the files and the date of any change.
- You must cause any work that you distribute or publish, that in whole or in part contains or is derived from the Program or any part thereof, to be licensed as a whole at no charge to all third parties under the terms of this License.
- If the modified program normally reads commands interactively when run, you must cause it, when started running for such interactive use in the most ordinary way, to print or display an announcement including an appropriate copyright notice and a notice that there is no warranty (or else, saying that you provide a warranty) and that users may redistribute the program under these conditions, and telling the user how to view a copy of this License. (Exception: if the Program itself is interactive but does not normally print such an announcement, your work based on the Program is not required to print an announcement.)

These requirements apply to the modified work as a whole. If identifiable sections of that work are not derived from the Program, and can be reasonably considered independent and separate works in themselves, then this License, and its terms, do not apply to those sections when you distribute them as separate works. But when you distribute the same sections as part of a whole which is a work based on the Program, the distribution of the whole must be on the terms of this License, whose permissions for other licensees extend to the entire whole, and thus to each and every part regardless of who wrote it.

Thus, it is not the intent of this section to claim rights or contest your rights to work written entirely by you; rather, the intent is to exercise the right to control the distribution of derivative or collective works based on the Program.

In addition, mere aggregation of another work not based on the Program with the Program (or with a work based on the Program) on a volume of a storage or distribution medium does not bring the other work under the scope of this License.

3. You may copy and distribute the Program (or a work based on it, under Section 2) in object code or executable form under the terms of Sections 1 and 2 above provided that you also do one of the following:

- Accompany it with the complete corresponding machine-readable source code, which must be distributed under the terms of Sections 1 and 2 above on a medium customarily used for software interchange; or,
- Accompany it with a written offer, valid for at least three years, to give any third party, for a charge no more than your cost of physically performing source distribution, a complete machine-readable copy of the corresponding source code, to be distributed under the terms of Sections 1 and 2 above on a medium customarily used for software interchange; or,
- Accompany it with the information you received as to the offer to distribute corresponding source code. (This alternative is allowed only for noncommercial distribution and only if you received the program in object code or executable form with such an offer, in accord with Subsection b above.)

The source code for a work means the preferred form of the work for making modifications to it. For an executable work, complete source code means all the source code for all modules it contains, plus any associated interface definition files, plus the scripts used to control compilation and installation of the executable. However, as a special exception, the source code distributed need not include anything that is normally distributed (in either source or binary form) with the major components (compiler, kernel, and so on) of the operating system on which the executable runs, unless that component itself accompanies the executable.

If distribution of executable or object code is made by offering access to copy from a designated place, then offering equivalent access to copy the source code from the same place counts as distribution of the source code, even though third parties are not compelled to copy the source along with the object code.

4. You may not copy, modify, sublicense, or distribute the Program except as expressly provided under this License. Any attempt otherwise to copy, modify, sublicense or distribute the Program is void, and will automatically terminate your rights under this License. However, parties who have received copies, or rights, from you under this License will not have their licenses terminated so long as such parties remain in full compliance.

5. You are not required to accept this License, since you have not signed it. However, nothing else grants you permission to modify or distribute the Program or its derivative works. These actions are prohibited by law if you do not accept this License. Therefore, by modifying or distributing the Program (or any work based on the Program), you indicate your acceptance of this License to do so, and all its terms and conditions for copying, distributing or modifying the Program or works based on it.

6. Each time you redistribute the Program (or any work based on the Program), the recipient automatically receives a license from the original licensor to copy, distribute or modify the Program subject to these terms and conditions. You may not impose any further restrictions on the recipients' exercise of the rights granted herein. You are not responsible for enforcing compliance by third parties to this License.

7. If, as a consequence of a court judgment or allegation of patent infringement or for any other reason (not limited to patent issues), conditions are imposed on you (whether by court order, agreement or otherwise) that contradict the conditions of this License, they do not excuse you from the conditions of this License. If you cannot distribute so as to satisfy simultaneously your obligations under this License and any other pertinent obligations, then as a consequence you may not distribute the Program at all. For example, if a patent license would not permit royalty-free redistribution of the Program by all those who receive copies directly or indirectly through you, then the only way you could satisfy both it and this License would be to refrain entirely from distribution of the Program.

If any portion of this section is held invalid or unenforceable under any particular circumstance, the balance of the section is intended to apply and the section as a whole is intended to apply in other circumstances.

It is not the purpose of this section to induce you to infringe any patents or other property right claims or to contest validity of any such claims; this section has the sole purpose of protecting the integrity of the free software distribution system, which is implemented by public license practices. Many people have made generous contributions to the wide range of software distributed through that system in reliance on consistent application of that system; it is up to the author/donor to decide if he or she is willing to distribute software through any other system and a licensee cannot impose that choice.

This section is intended to make thoroughly clear what is believed to be a consequence of the rest of this License.

8. If the distribution and/or use of the Program is restricted in certain countries either by patents or by copyrighted interfaces, the original copyright holder who places the Program under this License may add an explicit geographical distribution limitation excluding those countries, so that distribution is permitted only in or among countries not thus excluded. In such case, this License incorporates the limitation as if written in the body of this License.

9. The Free Software Foundation may publish revised and/or new versions of the General Public License from time to time. Such new versions will be similar in spirit to the present version, but may differ in detail to address new problems or concerns.

Each version is given a distinguishing version number. If the Program specifies a version number of this License which applies to it and "any later version", you have the option of following the terms and conditions either of that version or of any later version published by the Free Software Foundation. If the Program does not specify a version number of this License, you may choose any version ever published by the Free Software Foundation.

10. If you wish to incorporate parts of the Program into other free programs whose distribution conditions are different, write to the author to ask for permission. For software which is copyrighted by the Free Software Foundation, write to the Free Software Foundation; we sometimes make exceptions for this. Our decision will be guided by the two goals of preserving the free status of all derivatives of our free software and of promoting the sharing and reuse of software generally.

NO WARRANTY

11. BECAUSE THE PROGRAM IS LICENSED FREE OF CHARGE, THERE IS NO WARRANTY FOR THE PROGRAM, TO THE EXTENT PERMITTED BY

Copyright ④

APPLICABLE LAW, EXCEPT WHEN OTHERWISE STATED IN WRITING THE COPYRIGHT HOLDERS AND/OR OTHER PARTIES PROVIDE THE PROGRAM "AS IS" WITHOUT WARRANTY OF ANY KIND, EITHER EXPRESSED OR IMPLIED, INCLUDING, BUT NOT LIMITED TO, THE IMPLIED WARRANTIES OF MERCHANTABILITY AND FITNESS FOR A PARTICULAR PURPOSE. THE ENTIRE RISK AS TO THE QUALITY AND PERFORMANCE OF THE PROGRAM IS WITH YOU. SHOULD THE PROGRAM PROVE DEFECTIVE, YOU ASSUME THE COST OF ALL NECESSARY SERVICING, REPAIR OR CORRECTION.

12. IN NO EVENT UNLESS REQUIRED BY APPLICABLE LAW OR AGREED TO IN WRITING WILL ANY COPYRIGHT HOLDER, OR ANY OTHER PARTY WHO MAY MODIFY AND/OR REDISTRIBUTE THE PROGRAM AS PERMITTED ABOVE, BE LIABLE TO YOU FOR DAMAGES, INCLUDING ANY GENERAL, SPECIAL, INCIDENTAL OR CONSEQUENTIAL DAMAGES ARISING OUT OF THE USE OR INABILITY TO USE THE PROGRAM (INCLUDING BUT NOT LIMITED TO LOSS OF DATA OR DATA BEING RENDERED INACCURATE OR LOSSES SUSTAINED BY YOU OR THIRD PARTIES OR A FAILURE OF THE PROGRAM TO OPERATE WITH ANY OTHER PROGRAMS), EVEN IF SUCH HOLDER OR OTHER PARTY HAS BEEN ADVISED OF THE POSSIBILITY OF SUCH DAMAGES.

END OF TERMS AND CONDITIONS

How to Apply These Terms to Your New Programs

If you develop a new program, and you want it to be of the greatest possible use to the public, the best way to achieve this is to make it free software which everyone can redistribute and change under these terms.

To do so, attach the following notices to the program. It is safest to attach them to the start of each source file to most effectively convey the exclusion of warranty; and each file should have at least the "copyright" line and a pointer to where the full notice is found.

```
<one line to give the program's name and a brief idea of what it does.>  
Copyright (C) <year> <name of author>
```

This program is free software; you can redistribute it and/or modify it under the terms of the GNU General Public License** as published by the Free Software Foundation; either version 2 of the License, or (at your option) any later version.

This program is distributed in the hope that it will be useful, but WITHOUT ANY WARRANTY; without even the implied warranty of MERCHANTABILITY or FITNESS FOR A PARTICULAR PURPOSE. See the GNU General Public License for more details.

You should have received a copy of the GNU General Public License along with this program; if not, write to the Free Software Foundation, Inc., 59 Temple Place, Suite 330, Boston, MA 02111-1307 USA

Also add information on how to contact you by electronic and paper mail.

If the program is interactive, make it output a short notice like this when it starts in an interactive mode:

```
Gnomovision version 69, Copyright (C) year name of author  
Gnomovision comes with ABSOLUTELY NO WARRANTY;  
for details type `show w'.  
This is free software, and you are welcome to redistribute it under certain  
conditions; type `show c' for details.
```

The hypothetical commands `show w' and `show c' should show the appropriate parts of the General Public License. Of course, the commands you use may be called something other than `show w' and `show c'; they could even be mouse-clicks or menu items-- whatever suits your program.

You should also get your employer (if you work as a programmer) or your school, if any, to sign a "copyright disclaimer" for the program, if necessary. Here is a sample; alter the names:

```
Yoyodyne, Inc., hereby disclaims all copyright interest in the program  
'Gnomovision' (which makes passes at compilers) written by James  
Hacker.  
<signature of Ty Coon>, 1 April 1989  
Ty Coon, President of Vice
```

This General Public License does not permit incorporating your program into proprietary programs. If your program is a subroutine library, you may consider it more useful to permit linking proprietary applications with the library. If this is what you want to do, use the GNU Library General Public License instead of this License.

Memo



Panasonic Corporation
Web Site: <http://panasonic.net/>
© Panasonic Ecology Systems Co., Ltd 2021

Printed in Malaysia



60DHN8002ZM
M0621-0